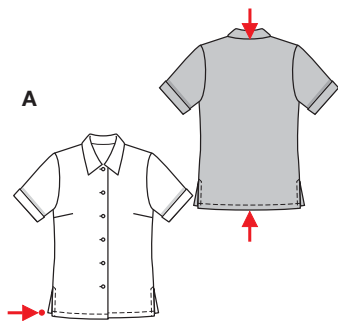


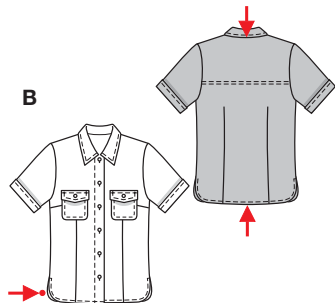
Größen • Tailles • Sizes

Eur.: **34 - 44**

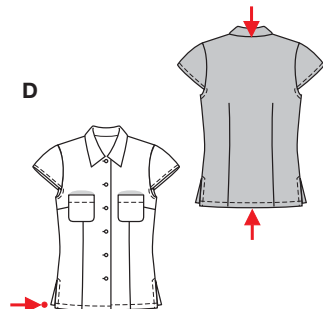
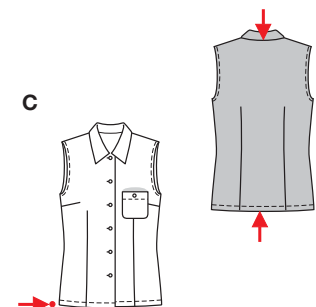
US: **8 - 18**



A 98 - 118 cm
38³/₄" to 46¹/₂"



B 59 - 62 cm
23¹/₄" to 24¹/₂"



ACD 62 - 65 cm
24¹/₂" to 25³/₄"

BCD 94 - 114 cm
37" to 45"



leicht, facile, easy, fácil.

ABCD: körpernah, ajusté, fitted; **Schulter • Epaule** **Shoulder:** normal, normale, average width.

Stoffempfehlung: Leinen, Baumwollstoffe, Viskose.
Tissus conseillés: lin, tissu en coton, viscose.
Recommended fabrics: linen, cottons, viscose rayon.

BLUSE • BLOUSE • BLUSA

Größen Tailles • Sizes	Eur. US	114 cm / 45 ins						140 cm / 55 ins					
		34 8	36 10	38 12	40 14	42 16	44 18	34 8	36 10	38 12	40 14	42 16	44 18
A	m yds	1.50 1 ³ / ₄	1.50 1 ³ / ₄	1.50 1 ³ / ₄	1.55 1 ³ / ₄	1.55 1 ³ / ₄	1.55 1 ³ / ₄	1.25 1 ¹ / ₂	1.25 1 ¹ / ₂	1.25 1 ¹ / ₂	1.25 1 ¹ / ₂	1.25 1 ¹ / ₂	1.30 1 ¹ / ₂
B	m yds	1.40 1 ³ / ₈	1.40 1 ³ / ₈	1.40 1 ³ / ₈	1.55 1 ³ / ₄	1.55 1 ³ / ₄	1.55 1 ³ / ₄	1.10 1 ¹ / ₄	1.10 1 ¹ / ₄	1.10 1 ¹ / ₄	1.15 1 ¹ / ₄	1.15 1 ¹ / ₄	1.15 1 ¹ / ₈
C	m yds	1.20 1 ³ / ₈	1.20 1 ³ / ₈	1.45 1 ³ / ₄	1.50 1 ³ / ₄	1.50 1 ³ / ₄	1.50 1 ³ / ₄	1.00 1 ¹ / ₈	1.10 1 ¹ / ₄	1.10 1 ¹ / ₄	1.10 1 ¹ / ₄	1.10 1 ¹ / ₄	1.30 1 ¹ / ₂
D	m yds	1.45 1 ³ / ₄	1.45 1 ³ / ₄	1.50 1 ³ / ₄	1.55 1 ³ / ₄	1.55 1 ³ / ₄	1.55 1 ³ / ₄	1.10 1 ¹ / ₄	1.10 1 ¹ / ₄	1.10 1 ¹ / ₄	1.10 1 ¹ / ₄	1.10 1 ¹ / ₄	1.30 1 ¹ / ₂

→ mit Richtung • avec sens • with nap

* ohne Richtung • sans sens • without nap