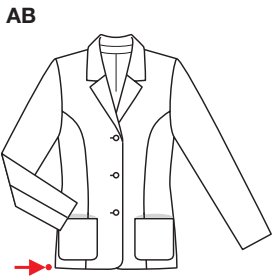
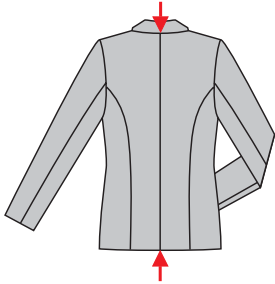


**PLUS** Größen • Tailles • Sizes  
 Eur.: **36 - 50**  
 US: **10 - 24**



**A B** 69 - 72 cm  
 27 1/4" to 28 1/2"

**A B** 104 - 136 cm  
 41" to 53 1/2"



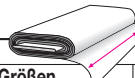
mittel, moins facile, average, dificultad media.

**AB:** normal weit, semi-ajusté, semi-fitted; **Schulter** **Epaule • Shoulder:** normal, normale, average width.

**Stoffempfehlung:** Gabardine, Baumwollmischgewebe.

**Tissus conseillés:** gabardine, tissus en coton mélangé.

**Recommended fabrics:** gabardine, cotton blends.



## BLAZER

Größen Tailles • Sizes	Eur. US	114 cm / 45 ins								140 cm / 55 ins							
		36	38	40	42	44	46	48	50	36	38	40	42	44	46	48	50
<b>AB</b>	m	2.10	2.10	2.10	2.10	2.15	2.15	2.50	2.50	1.70	1.70	1.70	1.90	1.95	1.95	2.00	2.00
	yds	2 3/8	2 3/8	2 3/8	2 3/8	2 1/2	2 1/2	2 3/4	2 3/4	1 7/8	1 7/8	1 7/8	2 1/8	2 1/4	2 1/4	2 1/4	2 1/4
<b>AB</b> Futter • Dou- blure • Lining	m	1.55	1.55	1.55	1.55	1.80	1.80	1.85	1.85	1.30	1.30	1.30	1.40	1.40	1.40	1.45	1.45
	yds	1 3/4	1 3/4	1 3/4	1 3/4	2	2	2 1/8	2 1/8	1 1/2	1 1/2	1 1/2	1 5/8	1 5/8	1 5/8	1 3/4	1 3/4

→ mit Richtung • avec sens • with nap

**8684**