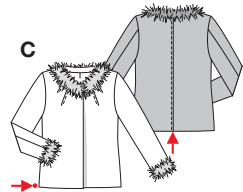




**A** 52 - 54 cm  
20<sup>1</sup>/<sub>2</sub>" to 21<sup>1</sup>/<sub>4</sub>"

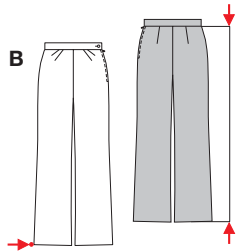
**A** 103 - 125 cm  
40<sup>3</sup>/<sub>4</sub>" to 49<sup>1</sup>/<sub>4</sub>"



**C** 65 - 67 cm  
25<sup>3</sup>/<sub>4</sub>" to 26<sup>1</sup>/<sub>2</sub>"

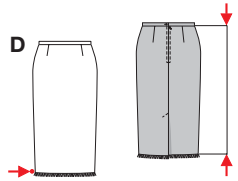
**C** 105 - 127 cm  
41<sup>1</sup>/<sub>2</sub>" to 50"

Weitere Angaben siehe Schnitttüte  
Autres indications voir pochette du patron  
See pattern envelope for further details  
Más indicaciones, en la bolsa con los patrones.



**B** 106 cm  
41<sup>3</sup>/<sub>4</sub>"

**B** 57 - 62 cm  
22<sup>1</sup>/<sub>2</sub>" to 24<sup>1</sup>/<sub>2</sub>"



**D** 73 cm  
28<sup>3</sup>/<sub>4</sub>"

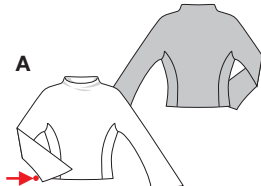
**D** 89 - 111 cm  
35" to 43<sup>3</sup>/<sub>4</sub>"



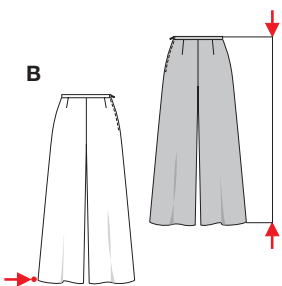
**8392**

**PLUS**

Größen • Tailles • Sizes  
Eur.: **38 - 48**  
US: **12 - 22**

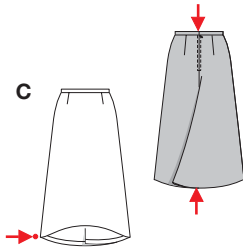


**A** 88 - 108 cm  
34<sup>3</sup>/<sub>4</sub>" to 42<sup>1</sup>/<sub>2</sub>"



**B** 104 - 107 cm  
41" to 42<sup>1</sup>/<sub>4</sub>"

**B** 75 - 83 cm  
29<sup>3</sup>/<sub>4</sub>" to 32<sup>3</sup>/<sub>4</sub>"



**C** 88 cm  
34<sup>3</sup>/<sub>4</sub>"

**C** 170 - 189 cm  
67" to 74<sup>1</sup>/<sub>2</sub>"

Weitere Angaben siehe Schnitttüte  
Autres indications voir pochette du patron  
See pattern envelope for further details  
Más indicaciones, en la bolsa con los patrones.



**8711**

Größen • Tailles • Sizes  
Eur.: **34 - 44**  
US: **8 - 18**