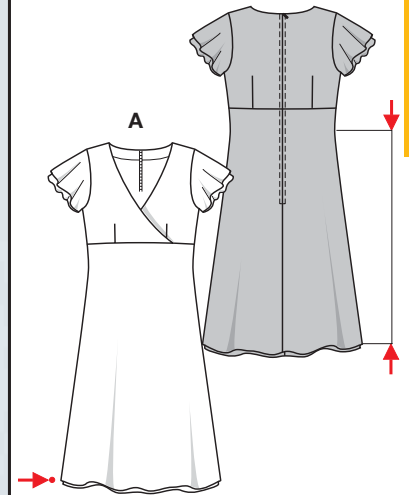
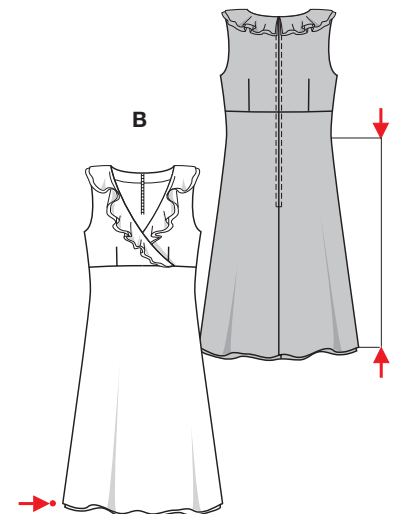


Größen • Tailles • Sizes  
 Eur. : **34 - 44**  
 US : **6 - 16**



AB 66 cm  
26"  
 AB 132 - 152 cm  
52" to 60"



**KLEID • ROBE • DRESS • VESTIDO**



mittel, moins facile, average, dificultad media.

**AB:** körpernah, ajusté, fitted.

**Stoffempfehlung:** Georgette, Kreppstoffe, Viskose.

**Tissus conseillés:** georgette, crêpe, viscose.

**Recommended fabrics:** georgette, crepe fabric, viscose rayon.

Größen Tailles • Sizes	Eur. US	114 cm / 45 ins						140 cm / 55 ins					
		34 8	36 10	38 12	40 14	42 16	44 18	34 8	36 10	38 12	40 14	42 16	44 18
A	m yds	2.50 2 <sup>3</sup> / <sub>4</sub> ★	2.65 3 ★	2.75 3 <sup>1</sup> / <sub>8</sub> ★	2.85 3 <sup>1</sup> / <sub>4</sub> ★	3.00 3 <sup>3</sup> / <sub>8</sub> ★	3.30 3 <sup>5</sup> / <sub>8</sub> ★	2.25 2 <sup>5</sup> / <sub>8</sub> ★	2.30 2 <sup>5</sup> / <sub>8</sub> ★	2.30 2 <sup>5</sup> / <sub>8</sub> ★	2.35 2 <sup>5</sup> / <sub>8</sub> ★	2.35 2 <sup>5</sup> / <sub>8</sub> ★	2.40 2 <sup>5</sup> / <sub>8</sub> ★
A Futter • Doublure Lining	m yds	1.20 1 <sup>1</sup> / <sub>8</sub>	1.35 1 <sup>5</sup> / <sub>8</sub>	1.45 1 <sup>3</sup> / <sub>4</sub>	1.55 1 <sup>3</sup> / <sub>4</sub>	1.65 1 <sup>7</sup> / <sub>8</sub>	1.80 2	1.20 1 <sup>1</sup> / <sub>8</sub>	1.20 1 <sup>1</sup> / <sub>8</sub>	1.20 1 <sup>1</sup> / <sub>8</sub>	1.20 1 <sup>3</sup> / <sub>8</sub>	1.20 1 <sup>3</sup> / <sub>8</sub>	1.20 1 <sup>3</sup> / <sub>8</sub>
B	m yds	2.70 3 ★	2.95 3 <sup>3</sup> / <sub>8</sub> ★	3.10 3 <sup>1</sup> / <sub>2</sub> ★	3.15 3 <sup>1</sup> / <sub>2</sub> ★	3.20 3 <sup>1</sup> / <sub>2</sub> ★	3.20 3 <sup>1</sup> / <sub>2</sub> ★	2.50 2 <sup>3</sup> / <sub>4</sub> ★	2.50 2 <sup>3</sup> / <sub>4</sub> ★	2.55 2 <sup>1</sup> / <sub>8</sub> ★	2.55 2 <sup>1</sup> / <sub>8</sub> ★	2.60 2 <sup>1</sup> / <sub>8</sub> ★	2.60 2 <sup>1</sup> / <sub>8</sub> ★

★ ohne Richtung • sans sens • without nap

**8836**