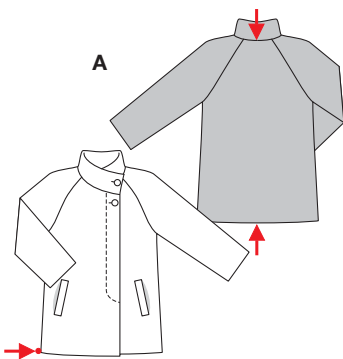
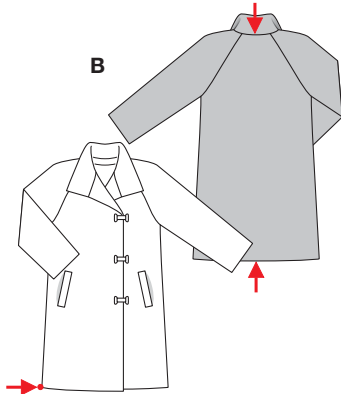


**burda®**



↓  
**A**  
↑  
82 - 85 cm  
32½" to 33½"  
**A** 117 - 137 cm  
46" to 54"



↓  
**B**  
↑  
100 - 103 cm  
39½" to 40¾"  
**B** 120 - 140 cm  
47¼" to 55¼"

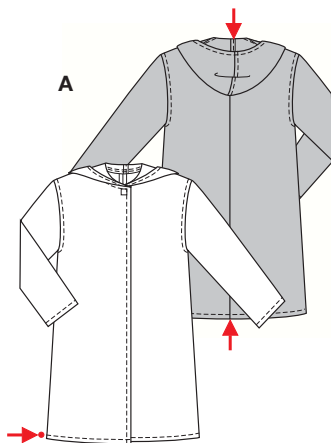
Weitere Angaben siehe Schnitttüte  
Autres indications voir pochette du patron  
See pattern envelope for further details  
Más indicaciones, en la bolsa con los patrones.

**8603**  
★

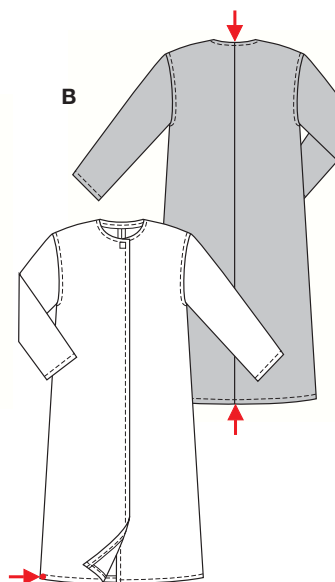
Größen • Tailles • Sizes  
Eur.: **34 - 44**  
US: **8 - 18**



**burda®**  
**EASY**



↓  
**A**  
↑  
103 - 107 cm  
40¾" to 42¼"  
**A** 156 - 188 cm  
61½" to 74"



↓  
**B**  
↑  
135 - 139 cm  
53¼" to 54¾"  
**B** 172 - 204 cm  
67¾" to 80½"

Weitere Angaben siehe Schnitttüte  
Autres indications voir pochette du patron  
See pattern envelope for further details  
Más indicaciones, en la bolsa con los patrones.

**8878**  
★

**PLUS** Größen • Tailles • Sizes  
Eur.: **36 - 50**  
US: **10 - 24**



**MIT NAHTZUGABE**  
  
**AVEC COUTURE SEAM ALLOWANCE**