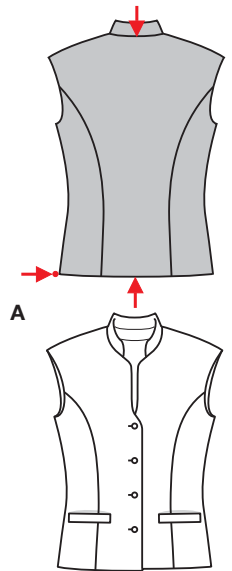
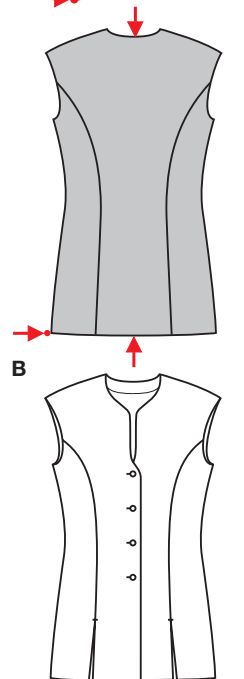


PLUS Größen • Tailles • Sizes
 Eur. : **36 - 50**
 US : **10 - 24**



↓
A 56 - 59 cm
 22¹/₄" to 23¹/₄"
 ↑
A 97 - 129 cm
 38¹/₄" to 50³/₄"



↓
B 71 - 75 cm
 28" to 29³/₄"
 ↑
B 105 - 137 cm
 41¹/₂" to 54"

BLUSE • BLOUSE • BLUSA



leicht, facile, easy, fácil.

AB: normal weit, semi-ajusté, semi-fitted; **Schulter Epaule • Shoulder:** breit, large, broad.

Stoffempfehlung: Leinen, Baumwollstoffe, Viskose.
Tissus conseillés: lin, tissus en coton, viscose.

Recommended fabrics: linen, cottons, viscose rayon.

Größen Tailles • Sizes	Eur. US	114 cm / 45 ins								140 cm / 55 ins							
		36 10	38 12	40 14	42 16	44 18	46 20	48 22	50 24	36 10	38 12	40 14	42 16	44 18	46 20	48 22	50 24
A	m	1.35	1.35	1.40	1.40	1.40	1.55	1.55	1.55	1.05	1.05	1.20	1.20	1.20	1.25	1.25	1.25
	yds	1 ⁵ / ₈	1 ⁵ / ₈	1 ⁵ / ₈	1 ⁵ / ₈	1 ⁵ / ₈	1 ³ / ₄	1 ³ / ₄	1 ³ / ₄	1 ¹ / ₄	1 ¹ / ₄	1 ³ / ₈	1 ³ / ₈	1 ³ / ₈	1 ¹ / ₂	1 ¹ / ₂	1 ¹ / ₂
B	m	1.60	1.60	1.65	1.65	1.65	1.85	1.85	1.85	1.40	1.40	1.55	1.55	1.55	1.60	1.60	1.60
	yds	1 ³ / ₄	1 ³ / ₄	1 ⁷ / ₈	1 ⁷ / ₈	1 ⁷ / ₈	2 ¹ / ₈	2 ¹ / ₈	2 ¹ / ₈	1 ⁵ / ₈	1 ⁵ / ₈	1 ³ / ₄	1 ³ / ₄	1 ³ / ₄	1 ³ / ₄	1 ³ / ₄	1 ³ / ₄

→ mit Richtung • avec sens • with nap

8960
★