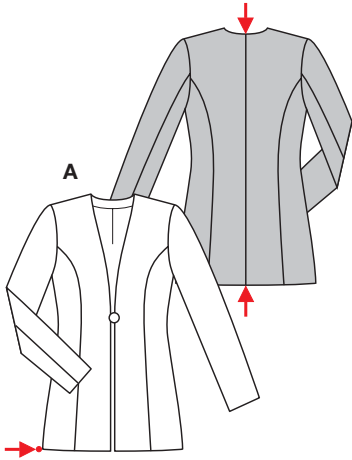
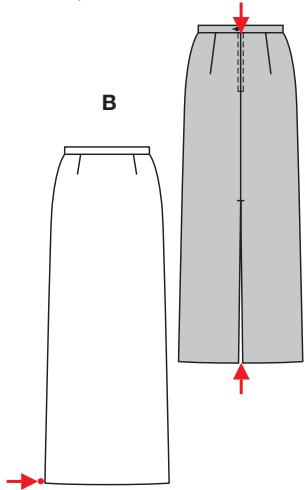


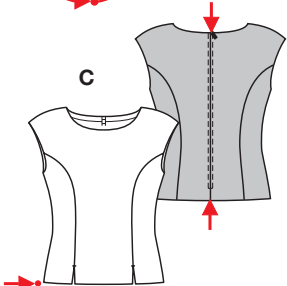
PLUS Größen • Tailles • Sizes
 Eur.: **36 - 50**
 US: **10 - 24**



A 76 - 80 cm
 30" to 31 1/2"
A 109 - 141 cm
 43" to 55 1/2"



B 106 cm
 41 3/4"
B 103 - 135 cm
 40 3/4" to 53 1/4"



C 54 - 57 cm
 21 1/4" to 22 1/2"
C 96 - 128 cm
 37 3/4" to 50 1/2"



ABENDKOMBINATION

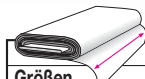


mittel, moins facile, average, dificultad media.

A: normal weit, semi-ajusté, semi-fitted; **Schulter • Epau- le • Shoulder:** normal, normale, average width; **B:** eng anliegend, très ajusté, close fitting; **C:** körpernah, ajusté, fitted.

Stoffempfehlung: Satin, Brokat, Kreppsatin.
Tissus conseillés: satin, brocart, satin en crêpe.
Recommended fabrics: satin, brocade, crepe satin.

COORDONNEE DE SOIREE • EVENING COORDINATES • CONJUNTO DE FIESTA



Größen Tailles • Sizes	Eur. US	114 cm / 45 ins										140 cm / 55 ins									
		36	38	40	42	44	46	48	50	36	38	40	42	44	46	48	50				
A	m yds	2.15 2 1/2	2.15 2 1/2	2.15 2 1/2	2.15 2 1/2	2.40 2 3/8	2.40 2 3/8	2.45 2 3/4	2.45 2 3/4	1.60 1 3/4	1.60 1 3/4	1.60 1 3/4	1.60 1 3/4	1.60 1 3/4	1.60 1 3/4	2.10 2 3/8	2.10 2 3/8				
A Futter • Dou- blure • Lining	m yds	1.50 1 3/4	1.50 1 3/4	1.95 2 1/4	1.95 2 1/4	2.00 2 1/4	2.00 2 1/4	2.15 2 1/2	2.15 2 1/2	1.35 1 1/8	1.35 1 1/8	1.45 1 3/4	1.50 1 3/4	1.50 1 3/4	1.55 1 3/4	1.55 1 3/4	1.55 1 3/4				
B	m yds	1.25 1 1/2	1.25 1 1/2	1.55 1 3/4	2.00 2 1/4	2.10 2 3/8	2.30 2 5/8	2.30 2 5/8	2.30 2 5/8	1.15 1 1/8	1.15 1 1/8	1.15 1 1/8	1.15 1 1/8	1.15 1 1/8	1.15 1 1/8	1.25 1 1/2	1.25 1 1/2				
B Futter • Dou- blure • Lining	m yds	1.15 1 1/8	1.15 1 1/8	1.45 1 3/4	1.95 2 1/4	2.05 2 3/8	2.25 2 5/8	2.25 2 5/8	2.25 2 5/8	1.15 1 1/8	1.15 1 1/8	1.15 1 1/8	1.15 1 1/8	1.15 1 1/8	1.15 1 1/8	1.15 1 1/8	1.15 1 1/8				
C	m yds	1.15 1 1/8	1.15 1 1/8	1.20 1 3/8	1.20 1 3/8	1.20 1 3/8	1.30 1 1/2	1.40 1 5/8	1.40 1 5/8	1.15 1 1/8	1.15 1 1/8	1.15 1 1/8	1.15 1 1/8	1.20 1 3/8	1.20 1 3/8	1.20 1 3/8	1.20 1 3/8				

→ mit Richtung • avec sens • with nap

★ ohne Richtung • sans sens • without nap

8965