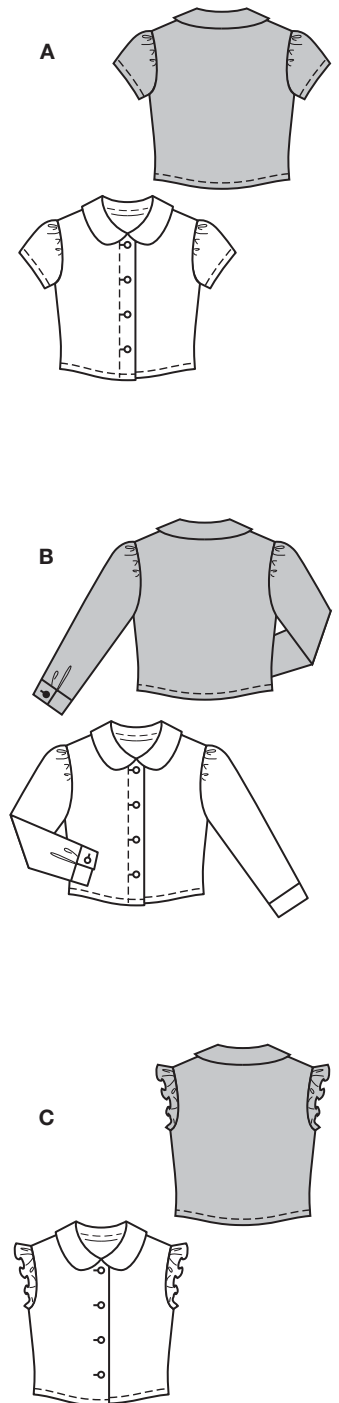


Größen • Tailles • Sizes  
Eur. : **98 - 128**  
US : **3 - 8**



9743



start

erweiterte Kenntnisse  
plus de connaissances  
some sewing experience  
amplios conocimientos  
**ABC:** körpernah, ajusté,  
fitted.

**Stoffempfehlung:** Baum-  
wollstoffe, leichte Jeans-  
stoffe, Leinenmischgewebe.  
**Tissus conseillés:** tissus  
en coton, tissu jean légers,  
lin mélange.

**Recommended fabrics:** cottons, lightwt. denim, linen blends.

**BLUSE • BLOUSE • BLUSA**

Größen Tailles • Sizes	Eur. US	114 cm / 45 ins						140 cm / 55 ins					
		98 3	104 4	110 5	116 6	122 7	128 8	98 3	104 4	110 5	116 6	122 7	128 8
<b>A</b>	m yds	0.70 7/8 →	0.75 7/8 →	0.75 7/8 →	0.75 7/8 →	0.75 7/8 →	0.75 7/8 →	0.70 7/8 →	0.75 7/8 →	0.75 7/8 →	0.75 7/8 →	0.75 7/8 →	0.75 7/8 →
<b>B</b>	m yds	0.80 7/8 →	0.90 1 →	0.90 1 →	0.90 1 →	1.00 1 1/8 →	1.00 1 1/8 →	0.80 7/8 →	0.90 1 →	0.90 1 →	0.90 1 →	1.00 1 1/8 →	1.00 1 1/8 →
<b>C</b>	m yds	0.60 3/4 →	0.65 7/8 →	0.65 7/8 →	0.65 7/8 →	0.65 7/8 →	0.65 7/8 →	0.60 3/4 →	0.65 7/8 →	0.65 7/8 →	0.65 7/8 →	0.65 7/8 →	0.65 7/8 →

→ mit Richtung • avec sens • with nap

**9744**