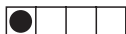
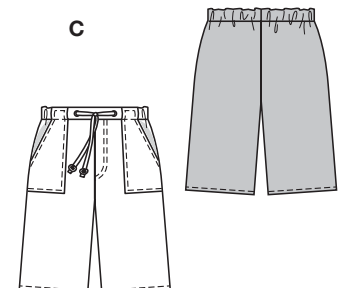
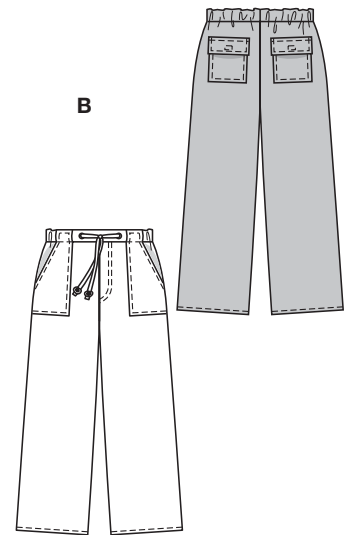
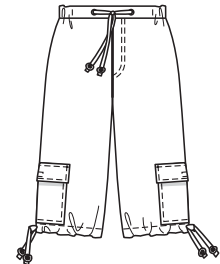
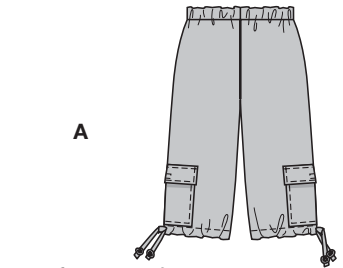


Größen • Tailles • Sizes
Eur. : **128 - 164**
US : **8 - 14**



sehr leicht, très facile, very easy, muy fácil.

ABC: normal weit, semi-ajusté, semi-fitted.

Stoffempfehlung: Baumwollstoffe, Leinen.

Tissus conseillés: tissu en coton, lin.

Recommended fabrics: cottons, linen.

HOSE • PANTALON • PANTS

Größen Tailles • Sizes	Eur. US	114 cm / 45 ins							140 cm / 55 ins						
		128	134	140	146	152	158	164	128	134	140	146	152	158	164
A	m	1.25	1.25	1.30	1.45	1.55	1.60	1.65	1.00	1.00	1.05	1.10	1.15	1.20	1.45
	yds	1 1/2	1 1/2	1 1/2	1 3/4	1 3/4	1 3/4	1 7/8	1 1/8	1 1/8	1 1/4	1 1/4	1 3/8	1 3/8	1 3/4
B	m	1.30	1.30	1.40	1.75	1.80	1.90	2.00	1.20	1.20	1.25	1.30	1.35	1.40	1.45
	yds	1 1/2	1 1/2	1 5/8	2	2	2 1/8	2 1/4	1 3/8	1 3/8	1 1/2	1 1/2	1 5/8	1 5/8	1 3/4
C	m	1.00	1.00	1.05	1.05	1.10	1.20	1.25	0.70	0.70	0.70	0.75	0.75	0.80	0.85
	yds	1 1/8	1 1/8	1 1/4	1 1/4	1 1/4	1 3/8	1 1/2	7/8	7/8	7/8	7/8	7/8	7/8	1

→ mit Richtung • avec sens • with nap

★ ohne Richtung • sans sens • without nap

9746