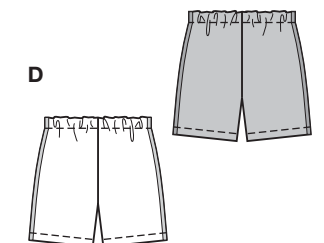
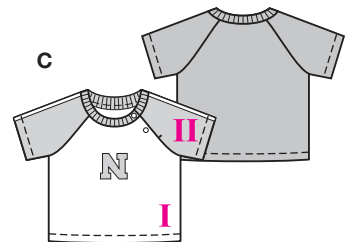
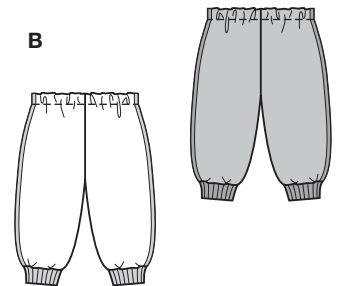
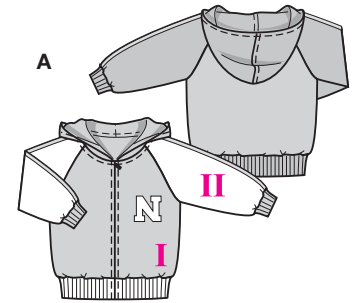
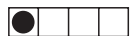


Größen • Tailles • Sizes
Eur. : **68 - 98**
US : **6M - 3**



**KOMBINATION
COORDONNEES
COORDINATES
COORDINADOS**



sehr leicht, très facile, very easy, muy fácil.

ABCD: normal weit, semi-ajusté, semi-fitted.

Stoffempfehlung:

AB: Sweatshirtstoffe;
CD: Jersey.

Tissus conseillés: AB: tissu molletonné; CD: jersey.

Recommended fabrics:

AB: sweatshirting;
CD: jersey.

Größen Tailles • Sizes	Eur. US	114 cm / 45 ins					140 cm / 55 ins						
		68 6 M	74 9 M	80 12 M	86 18 M	92 2	98 3	68 6 M	74 9 M	80 12 M	86 18 M	92 2	98 3
A I	m yds	0.50 5/8	0.50 5/8	0.55 3/4	0.55 3/4	0.60 3/4	0.60 3/4	0.35 1/2	0.35 1/2	0.40 1/2	0.40 1/2	0.40 1/2	0.40 1/2
A II	m yds	0.35 1/2	0.35 1/2	0.40 1/2	0.40 1/2	0.45 5/8	0.45 5/8	0.35 1/2	0.35 1/2	0.40 1/2	0.40 1/2	0.45 5/8	0.45 5/8
A I+II	m yds	100 cm / 39 1/2 ins					0.15 1/4	0.15 1/4	0.15 1/4	0.15 1/4	0.15 1/4	0.15 1/4	0.15 1/4
B	m yds	0.45 5/8	0.45 5/8	0.55 3/4	0.55 3/4	0.60 3/4	0.60 3/4	0.45 5/8	0.45 5/8	0.55 3/4	0.55 3/4	0.60 3/4	0.60 3/4
B	m yds	100 cm / 39 1/2 ins					0.15 1/4	0.15 1/4	0.15 1/4	0.15 1/4	0.15 1/4	0.15 1/4	0.15 1/4
C I	m yds	0.40 1/2	0.40 1/2	0.40 1/2	0.40 1/2	0.45 5/8	0.45 5/8	0.40 1/2	0.40 1/2	0.40 1/2	0.40 1/2	0.45 5/8	0.45 5/8
C II	m yds	0.30 3/8	0.30 3/8	0.35 1/2	0.35 1/2	0.35 1/2	0.35 1/2	0.30 3/8	0.30 3/8	0.35 1/2	0.35 1/2	0.35 1/2	0.35 1/2
C	m yds	100 cm / 39 1/2 ins					0.10 1/8	0.10 1/8	0.10 1/8	0.10 1/8	0.10 1/8	0.10 1/8	0.10 1/8
D	m yds	0.40 1/2	0.40 1/2	0.45 5/8	0.45 5/8	0.50 5/8	0.50 5/8	0.40 1/2	0.40 1/2	0.45 5/8	0.45 5/8	0.50 5/8	0.50 5/8

→ mit Richtung
avec sens • with nap

* ohne Richtung
sans sens • without nap

JERSEY
KNITS

9748