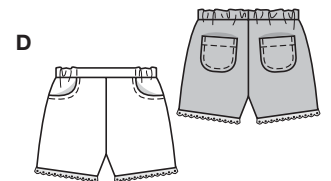
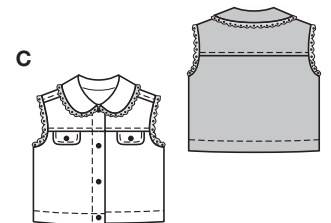
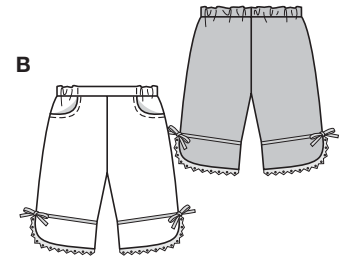
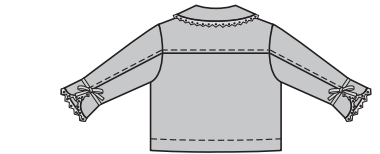


Größen • Tailles • Sizes
 Eur. : **68 - 98**
 US : **6M - 3**



JACKE + HOSE



mittel, moins facile, average, difficult media.

ABCD: normal weit, semi-ajusté, semi-fitted.

Stoffempfehlung: Leichte Jeansstoffe, Gabardine, Baumwollstoffe.

Tissus conseillés: tissu jean légers, gabardine, tissus en coton.

Recommended fabrics: lightwt. denim, gabardine, cottons.

VESTE



+ PANTALON • JACKET + PANTS • CHAQUETA + PANTALON

Größen Tailles • Sizes	Eur. US	114 cm / 45 ins					140 cm / 55 ins						
		68 6 M	74 9 M	80 12 M	86 18 M	92 2	98 3	68 6 M	74 9 M	80 12 M	86 18 M	92 2	98 3
A	m yds	0.75 7/8	0.75 7/8	0.75 7/8	0.85 1	0.85 1	0.85 1	0.55 3/4	0.55 3/4	0.55 3/4	0.65 7/8	0.65 7/8	0.65 7/8
B	m yds	0.55 3/4	0.55 3/4	0.55 3/4	0.65 7/8	0.65 7/8	0.65 7/8	0.45 5/8	0.45 5/8	0.45 5/8	0.55 3/4	0.55 3/4	0.55 3/4
C	m yds	0.70 7/8	0.70 7/8	0.70 7/8	0.75 7/8	0.75 7/8	0.75 7/8	0.45 5/8	0.45 5/8	0.45 5/8	0.55 3/4	0.55 3/4	0.55 3/4
D	m yds	0.45 5/8	0.45 5/8	0.45 5/8	0.50 5/8	0.50 5/8	0.50 5/8	0.40 1/2	0.40 1/2	0.40 1/2	0.40 1/2	0.40 1/2	0.40 1/2

→ mit Richtung • avec sens • with nap

★ ohne Richtung • sans sens • without nap

9749