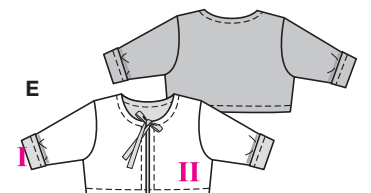
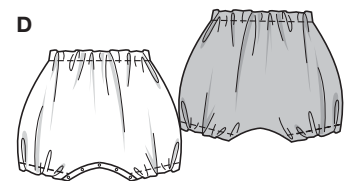
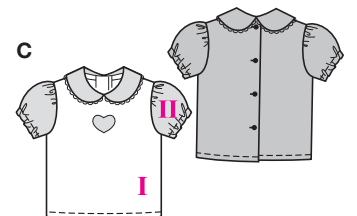


Größen • Tailles • Sizes
 Eur.: **56 - 80**
 US: **1M - 12M**



KOMBINATION



leicht, facile, easy, fácil.

ABCDE: normal weit, semi-ajusté, semi-fitted.

Stoffempfehlung: Baumwollstoffe; E: auch Strickstoffe.

Tissus conseillés: tissus en coton, E: aussi tissus tricot.

Recommended fabrics: cottons; E: sweater knits as well.

COORDONNEES • COORDINATES • COORDINADOS

Größen Tailles • Sizes	Eur. US	114 cm / 45 ins					140 cm / 55 ins				
		56 1 M	62 3 M	68 6 M	74 9 M	80 12 M	56 1 M	62 3 M	68 6 M	74 9 M	80 12 M
A	m yds	0.75 7/8	0.75 7/8	0.85 1	0.85 1	0.90 1	0.65 7/8	0.65 7/8	0.75 7/8	0.75 7/8	0.75 7/8
B	m yds	0.65 7/8	0.65 7/8	0.75 7/8	0.75 7/8	0.80 7/8	0.60 3/4	0.60 3/4	0.70 7/8	0.70 7/8	0.75 7/8
C I	m yds	0.35 1/2	0.35 1/2	0.40 1/2	0.40 1/2	0.40 1/2	0.35 1/2	0.35 1/2	0.40 1/2	0.40 1/2	0.40 1/2
C II	m yds	0.20 1/4	0.20 1/4	0.25 3/8	0.25 3/8	0.25 3/8	0.15 1/4	0.15 1/4	0.20 1/4	0.20 1/4	0.20 1/4
D	m yds	0.40 1/2	0.40 1/2	0.45 5/8	0.45 5/8	0.45 5/8	0.35 1/2	0.35 1/2	0.40 1/2	0.40 1/2	0.40 1/2
E I	m yds	0.30 3/8	0.30 3/8	0.45 5/8	0.45 5/8	0.45 5/8	0.30 3/8	0.30 3/8	0.30 3/8	0.30 3/8	0.30 3/8
E II	m yds	0.30 3/8	0.30 3/8	0.35 1/2	0.35 1/2	0.40 1/2	0.25 3/8	0.25 3/8	0.30 3/8	0.30 3/8	0.30 3/8

→ mit Richtung
avec sens • with nap

★ ohne Richtung
sans sens • without nap

9752