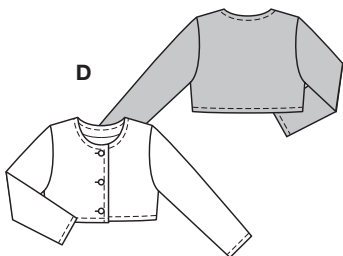
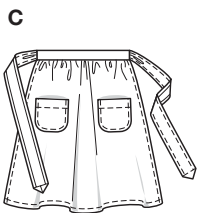
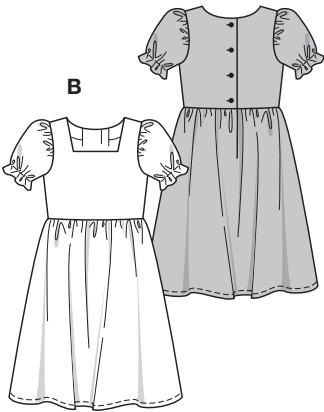
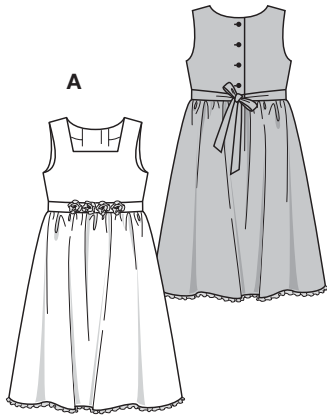


Größen • Tailles • Sizes
 Eur.: **116 - 146**
 US: **6 - 11**



KLEID + JACKE



leicht, facile, easy, fácil.

AB: körpernah, ajusté, fitted; **D:** normal weit, semi-ajusté, semi-fitted.

Stoffempfehlung: Baumwollstoffe, Leinen; D: Nickistoffe, Strickstoffe.

Tissus conseillés: tissus en coton, lin; D: velours éponge, tissus tricot.

Recommended fabrics: cottons, linen; D: terry velour, sweater knits.

ROBE + VESTE • DRESS + JACKET • VESTIDO + CHAQUETA

Größen Tailles • Sizes	Eur. US	114 cm / 45 ins					140 cm / 55 ins						
		116 6	122 7	128 8	134 9	140 10	146 11	116 6	122 7	128 8	134 9	140 10	146 11
A	m	1.50	1.55	1.90	2.00	2.10	2.20	1.40	1.50	1.55	1.65	1.70	1.75
	yds	1 ³ / ₄	1 ³ / ₄	2 ¹ / ₈	2 ¹ / ₄	2 ³ / ₈	2 ¹ / ₂	1 ⁵ / ₈	1 ³ / ₄	1 ³ / ₄	1 ⁷ / ₈	1 ⁷ / ₈	2
B	m	1.45	1.55	1.95	2.05	2.15	2.25	1.30	1.30	1.35	1.45	1.50	1.55
	yds	1 ³ / ₄	1 ³ / ₄	2 ¹ / ₄	2 ³ / ₈	2 ¹ / ₂	2 ⁵ / ₈	1 ¹ / ₂	1 ¹ / ₂	1 ⁵ / ₈	1 ³ / ₄	1 ³ / ₄	1 ³ / ₄
C	m	0.65	0.65	0.65	0.70	0.70	0.70	0.65	0.65	0.65	0.70	0.70	0.70
	yds	7 ⁷ / ₈	7 ⁷ / ₈	7 ⁷ / ₈	7 ⁷ / ₈	7 ⁷ / ₈	7 ⁷ / ₈	7 ⁷ / ₈	7 ⁷ / ₈	7 ⁷ / ₈	7 ⁷ / ₈	7 ⁷ / ₈	7 ⁷ / ₈
D	m	0.80	0.80	0.85	0.90	0.95	0.95	0.70	0.75	0.75	0.80	0.80	0.85
	yds	7 ⁷ / ₈	7 ⁷ / ₈	1	1	1 ¹ / ₈	1 ¹ / ₈	7 ⁷ / ₈	7 ⁷ / ₈	7 ⁷ / ₈	7 ⁷ / ₈	7 ⁷ / ₈	1

→ mit Richtung • avec sens • with nap