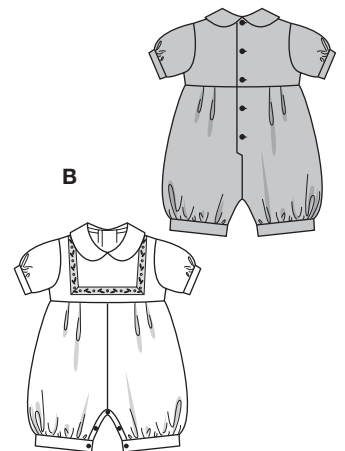
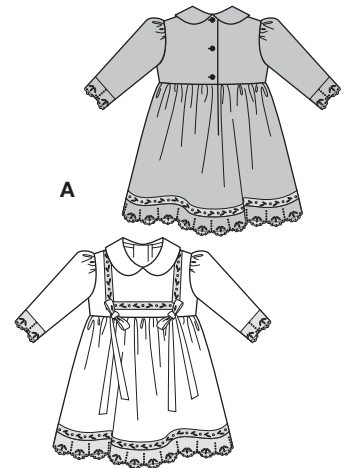


Größen • Tailles • Sizes  
 Eur. : **62 - 86**  
 US : **3M - 18M**



## TAUFGLEID



mittel, moins facile, average, dificultad media.

**AB:** normal weit, semi-ajusté, semi-fitted.

**Stoffempfehlung:** Dupionseide, Satin.

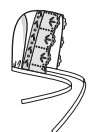
**Tissus conseillés:** soie dupion, satin.

**Recommended fabrics:** dupion silk, satin.

→ mit Richtung  
avec sens • with nap

## ROBE DE BAPTEME • CHRISTENING DRESS • VESTIDO PARA BAUTIZO

Größen Tailles • Sizes	Eur. US	90 cm / 36 ins					140 cm / 55 ins				
		62 3 M	68 6 M	74 9 M	80 12 M	86 18 M	62 3 M	68 6 M	74 9 M	80 12 M	86 18 M
A	m	1.25	1.35	1.50	1.55	1.65	0.90	0.95	1.05	1.15	1.20
	yds	1½	1⅝	1¾	1¾	1⅞	1	1⅛	1¼	1⅜	1⅝
B	m	1.00	1.05	1.10	1.25	1.35	0.65	0.70	0.80	0.85	0.90
	yds	1⅛	1¼	1¼	1½	1⅝	⅞	⅞	⅞	1	1
Kopfumfang • Tour de tête • Head circumference	cm	38	42	46	47	48	38	42	46	47	48
	inch	15	16½	18⅛	18½	19	15	16½	18⅛	18½	19
C	m	0.45	0.55	0.55	0.60	0.60	0.40	0.45	0.50	0.50	0.50
	yds	⅝	¾	¾	¾	¾	½	⅝	⅝	⅝	⅝



**9756**  
★