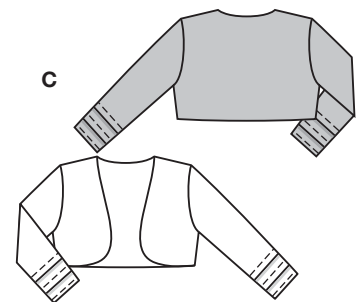
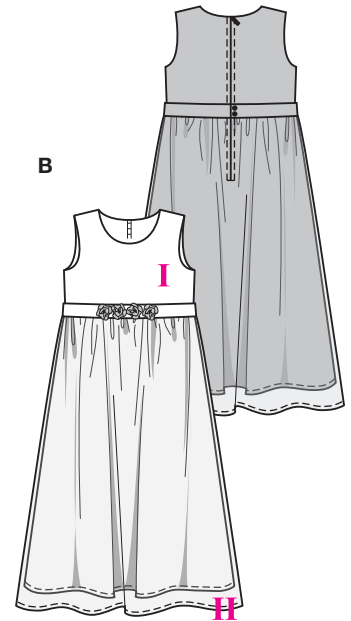
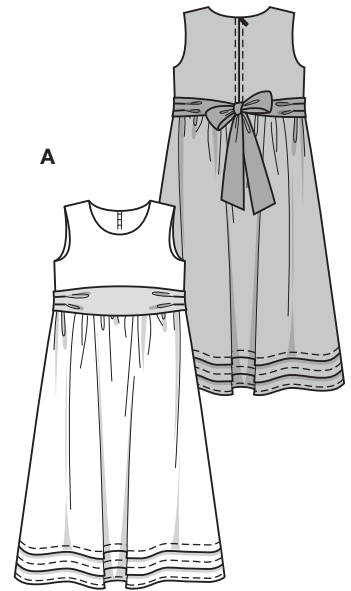


Größen • Tailles • Sizes  
 Eur. : **92 - 128**  
 US : **2 - 8**



leicht, facile, easy, fácil.  
 ABC: normal weit, semi-ajusté, semi-fitted.

**Stoffempfehlung:** Baumwollstoffe, Taft; B II: Organza.

**Tissus conseillés:** tissus en coton, taffetas; B II: organza.

**Recommended fabrics:** cottons, taffeta; B II: organza.

→ mit Richtung  
 avec sens • with nap

★ ohne Richtung  
 sans sens • without nap

## KLEID • ROBE • DRESS • VESTIDO

Größen Tailles • Sizes	Eur. US	114 cm / 45 ins						140 cm / 55 ins							
		92	98	104	110	116	122	128	92	98	104	110	116	122	128
<b>A</b>	m yds	1.35 1 5/8	1.40 1 5/8	1.55 1 3/4	1.60 1 3/4	1.70 1 7/8	1.80 2	2.20 2 1/2	1.35 1 5/8	1.40 1 5/8	1.55 1 3/4	1.60 1 3/4	1.70 1 7/8	1.80 2	1.90 2 1/8
<b>A</b> Garniturstoff • Tissu garniture Contrasting fabric	m yds	0.35 1/2	0.35 1/2	0.35 1/2	0.35 1/2	0.35 1/2	0.35 1/2	0.35 1/2	0.35 1/2	0.35 1/2	0.35 1/2	0.35 1/2	0.35 1/2	0.35 1/2	0.35 1/2
<b>B I</b>	m yds	1.25 1 1/2	1.30 1 1/2	1.45 1 3/4	1.50 1 3/4	1.70 1 7/8	1.75 2	2.00 2 1/4	1.15 1 1/8	1.20 1 1/8	1.30 1 1/2	1.40 1 5/8	1.50 1 5/8	1.60 1 7/8	1.70 1 7/8
<b>B II</b>	m yds	1.20 1 3/8	1.30 1 1/2	1.40 1 5/8	1.50 1 3/4	1.60 1 7/8	1.80 2	1.20 1 3/8	1.30 1 1/2	1.40 1 5/8	1.50 1 5/8	1.60 1 7/8	1.70 1 7/8	1.80 2	
<b>C</b>	m yds	0.70 7/8	0.75 7/8	0.75 7/8	0.80 7/8	0.85 1	0.90 1	0.90 1	0.55 3/4	0.55 3/4	0.60 3/4	0.60 3/4	0.65 7/8	0.65 7/8	0.70 7/8

**9757**  
★