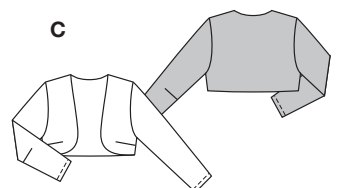
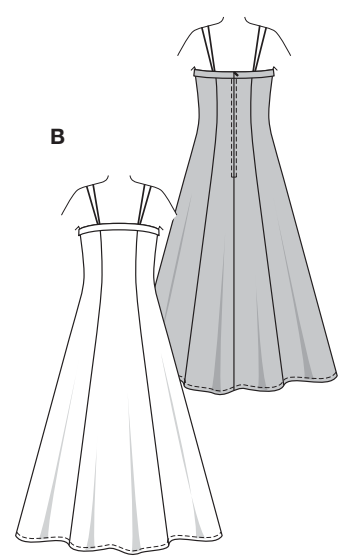
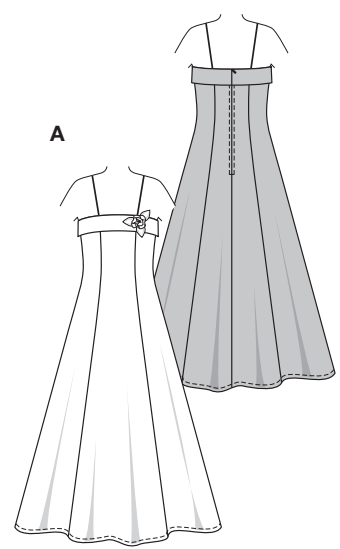


Größen • Tailles • Sizes
 Eur. : **146 - 176**
 US : **11 - 16 jun.**



leicht, facile, easy, fácil.

ABC: eng anliegend, très ajusté, close fitting.

Stoffempfehlung: Satin, Taft.

Tissus conseillés: satin, taffetas.

Recommended fabrics: satin, taffeta.

→ mit Richtung
avec sens • with nap

★ ohne Richtung
sans sens • without nap

KLEID • ROBE • DRESS • VESTIDO

Größen Tailles • Sizes	Eur. US	114 cm / 45 ins						140 cm / 55 ins					
		146 11	152 12	158 13jun.	164 14jun.	170 15jun.	176 16jun.	146 11	152 12	158 13jun.	164 14jun.	170 15jun.	176 16jun.
A	m yds	3.10 3 1/2	3.55 4	3.80 4 1/4	4.00 4 3/8	4.15 4 5/8	4.45 5	2.25 2 5/8	2.35 2 5/8	2.50 2 3/4	3.00 3 3/8	3.10 3 1/2	3.30 3 5/8
B	m yds	3.10 3 1/2	3.60 4	3.75 4 1/4	3.95 4 3/8	4.15 4 5/8	4.30 4 3/4	2.35 2 5/8	2.45 2 3/4	2.55 2 7/8	2.65 3	2.95 3 3/8	3.05 3 1/2
C	m yds	0.65 7/8	0.70 7/8	0.75 7/8	0.75 7/8	0.80 7/8	1.00 1 1/8	0.60 3/4	0.65 7/8	0.70 7/8	0.75 7/8	0.75 7/8	0.80 7/8
C Futter • Doublure Lining	m yds	0.35 1/2	0.35 1/2	0.40 1/2	0.40 1/2	0.40 1/2	0.45 5/8	0.35 1/2	0.35 1/2	0.40 1/2	0.40 1/2	0.40 1/2	0.45 5/8

9760