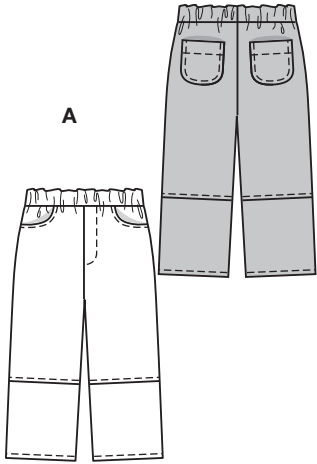
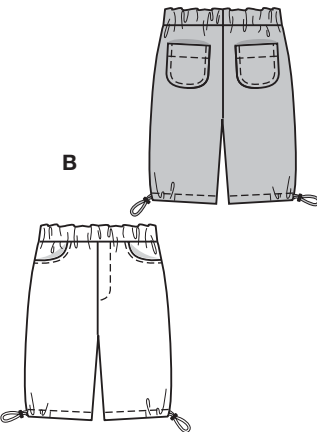


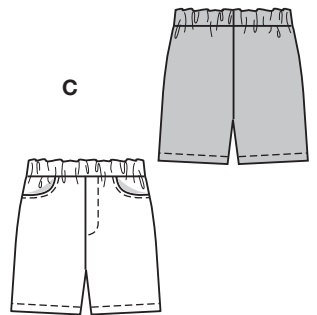
Größen • Tailles • Sizes
 Eur.: **92 - 116**
 US: **2 - 6**



A



B



C



9792

A

C

B

start 2

geringe Kenntnisse
 quelques connaissances
 little sewing experience
 pocos conocimientos
ABC: normal weit,
 semi-ajusté, semi-fitted.

Stoffempfehlung:
 Baumwollstoffe, leichte
 Jeansstoffe.

Tissus conseillés: tissus en
 coton, tissu jean légers.
Recommended fabrics:
 cottons, lightwt. denim.

HOSE • PANTALON • PANTS

Größen Tailles • Sizes	Eur. US	114 cm / 45 ins					140 cm / 55 ins				
		92	98	104	110	116	92	98	104	110	116
A	m yds	0.75 7/8 →	0.95 1 1/8 →	0.95 1 1/8 →	1.05 1 1/4 →	1.05 1 1/4 →	0.65 7/8 →	0.75 7/8 →	0.75 7/8 →	0.85 1 →	0.85 1 →
B	m yds	0.65 7/8 →	0.70 7/8 →	0.70 7/8 →	0.80 7/8 →	0.80 7/8 →	0.55 3/4 →	0.60 3/4 →	0.60 3/4 →	0.60 3/4 →	0.60 3/4 →
C	m yds	0.55 3/4 →	0.60 3/4 →	0.60 3/4 →	0.65 7/8 →	0.65 7/8 →	0.45 5/8 →	0.50 5/8 →	0.50 5/8 →	0.50 5/8 →	0.50 5/8 →

→ mit Richtung • avec sens • with nap