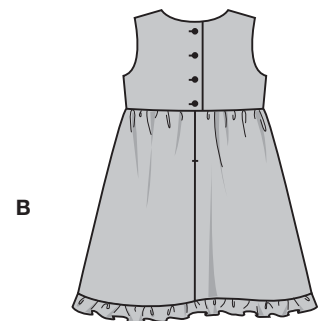
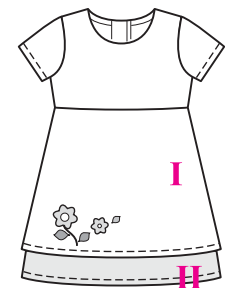


Größen • Tailles • Sizes
Eur. : **92 - 116**
US : **2 - 6**



start 3

erweiterte Kenntnisse
plus de connaissances
some sewing experience
amplios conocimientos
AB: normal weit,
semi-ajusté, semi-fitted.

Stoffempfehlung: Baum-
wollstoffe, Kreppstoffe.

Tissus conseillés:
tissus en coton, crêpe.

Recommended fabrics:
cottons, crepe fabric.

KLEID • ROBE • DRESS • VESTIDO

Größen Tailles • Sizes	Eur. US	114 cm / 45 ins					140 cm / 55 ins				
		92	98	104	110	116	92	98	104	110	116
A I	m yds	0.80 7/8 ★	0.80 7/8 ★	0.80 7/8 ★	0.90 1 ★	0.90 1 ★	0.65 7/8 ★	0.65 7/8 ★	0.65 7/8 ★	0.75 7/8 ★	0.75 7/8 ★
A II	m yds	0.45 5/8 →	0.45 5/8 →	0.50 5/8 →	0.60 3/4 →	0.60 3/4 →	0.45 5/8 →	0.45 5/8 →	0.45 5/8 →	0.50 5/8 →	0.50 5/8 →
B	m yds	1.30 1 1/2 →	1.30 1 1/2 →	1.60 1 3/4 →	1.75 2 →	1.75 2 →	1.00 1 1/8 →	1.00 1 1/8 →	1.20 1 3/8 →	1.35 1 5/8 →	1.35 1 5/8 →

→ mit Richtung • avec sens • with nap

★ ohne Richtung • sans sens • without nap

9799