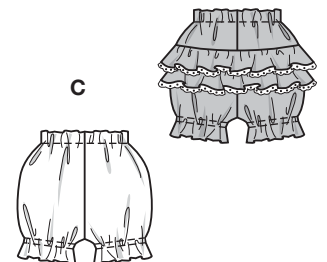
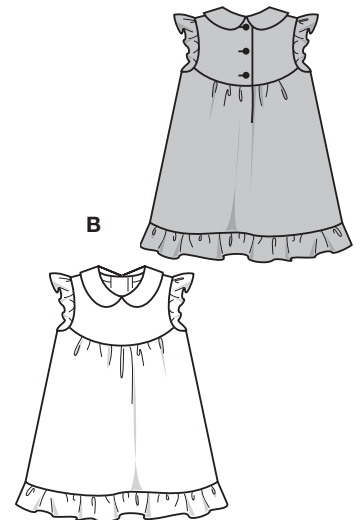
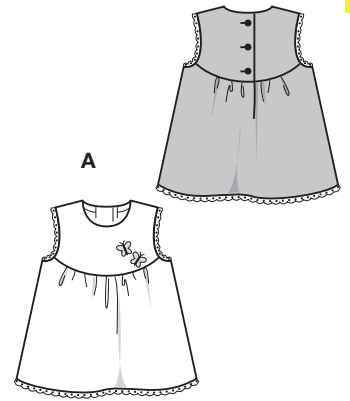


9810

9810



Größen • Tailles • Sizes
Eur. : **62 - 86**
US : **3M - 18M**



KLEID + HOSE



sehr leicht, très facile, very easy, muy fácil.

ABC: normal weit, semi-ajusté, semi-fitted.

Stoffempfehlung:

Baumwollstoffe.

Tissus conseillés:

tissus en coton.

Recommended fabrics: cottons.

ROBE + PANTALON • DRESS + PANTS • VESTIDO + PANTALON

Größen Tailles • Sizes	Eur. US	114 cm / 45 ins					140 cm / 55 ins				
		62 3 M	68 6 M	74 9 M	80 12 M	86 18 M	62 3 M	68 6 M	74 9 M	80 12 M	86 18 M
A	m yds	0.50 5/8	0.50 5/8	0.50 5/8	0.50 5/8	0.50 5/8	0.50 5/8	0.50 5/8	0.50 5/8	0.50 5/8	
B	m yds	0.80 7/8	0.80 7/8	0.80 7/8	0.80 7/8	1.05 1 1/4	0.80 7/8	0.80 7/8	0.80 7/8	0.80 7/8	
C	m yds	0.65 7/8	0.65 7/8	0.65 7/8	0.65 7/8	0.65 7/8	0.50 5/8	0.50 5/8	0.50 5/8	0.50 5/8	

→ mit Richtung • avec sens • with nap