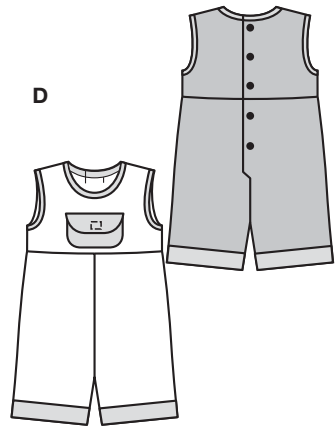
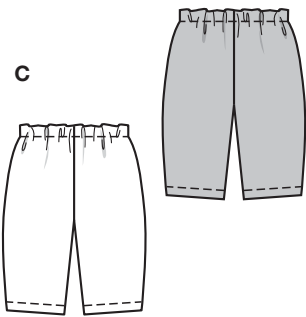
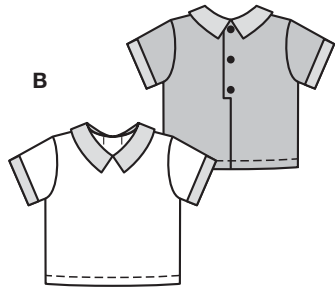
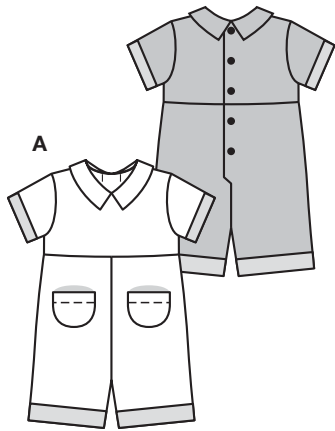


Größen • Tailles • Sizes
 Eur.: **62 - 86**
 US: **3M - 18M**



KOMBINATION



leicht, facile, easy, fácil.

ABCD: normal weit, semi-ajusté, semi-fitted.

Stoffempfehlung:
 ACD: Baumwollstoffe, leichte Jeansstoffe; B: Jersey.

Tissus conseillés:
 ACD: tissus en coton, tissu jean légers; B: jersey.

Recommended fabrics:
 ACD: cottons, lightwt. denim; B: jersey.

→ mit Richtung
 avec sens • with nap

COORDONNEES • COORDINATES • COORDINADOS

Größen Tailles • Sizes	Eur. US	114 cm / 45 ins					140 cm / 55 ins				
		62 3 M	68 6 M	74 9 M	80 12 M	86 18 M	62 3 M	68 6 M	74 9 M	80 12 M	86 18 M
A	m yds	0.80 7/8 →	0.80 7/8 →	0.90 1 →	0.90 1 →	0.95 1 1/8 →	0.60 3/4 →	0.60 3/4 →	0.65 7/8 →	0.65 7/8 →	0.70 7/8 →
A Garniturstoff • Tissu garniture • Contrasting fabric	m yds	0.20 1/4 →	0.20 1/4 →	0.20 1/4 →	0.20 1/4 →	0.20 1/4 →	0.20 1/4 →	0.20 1/4 →	0.20 1/4 →	0.20 1/4 →	0.20 1/4 →
B	m yds	0.50 5/8 →	0.50 5/8 →	0.55 3/4 →	0.55 3/4 →	0.60 3/4 →	0.40 1/2 →	0.40 1/2 →	0.45 5/8 →	0.45 5/8 →	0.45 5/8 →
B Garniturstoff • Tissu garniture • Contrasting fabric	m yds	0.20 1/4 →	0.20 1/4 →	0.20 1/4 →	0.20 1/4 →	0.20 1/4 →	0.20 1/4 →	0.20 1/4 →	0.20 1/4 →	0.20 1/4 →	0.20 1/4 →
C	m yds	0.45 5/8 →	0.45 5/8 →	0.55 3/4 →	0.55 3/4 →	0.55 3/4 →	0.45 5/8 →	0.45 5/8 →	0.55 3/4 →	0.55 3/4 →	0.55 3/4 →
D	m yds	0.60 3/4 →	0.60 3/4 →	0.65 7/8 →	0.65 7/8 →	0.70 7/8 →	0.45 5/8 →	0.45 5/8 →	0.65 7/8 →	0.65 7/8 →	0.70 7/8 →
D Garniturstoff • Tissu garniture • Contrasting fabric	m yds	0.30 3/8 →	0.30 3/8 →	0.30 3/8 →	0.30 3/8 →	0.35 1/2 →	0.30 3/8 →	0.30 3/8 →	0.30 3/8 →	0.30 3/8 →	0.35 1/2 →