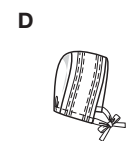
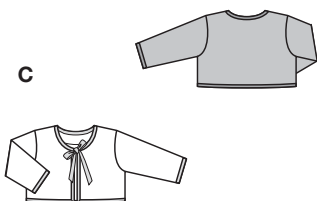
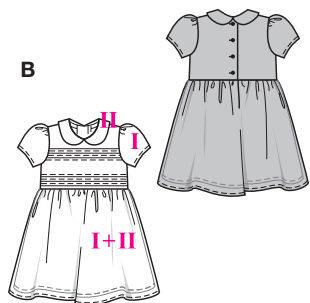
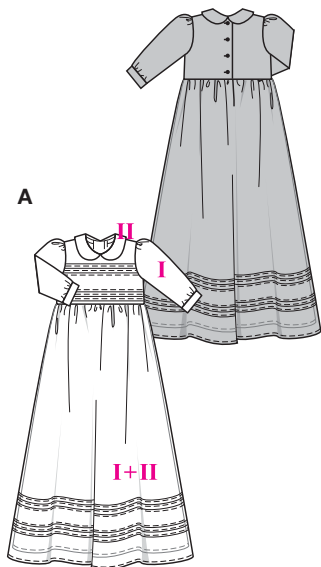


Größen • Tailles • Sizes

Eur.: **62 - 86**

US: **3M - 18M**



## TAUFGLEID



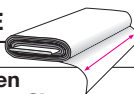
mittel, moins facile, average, dificultad media.

**Stoffempfehlung:** A I, B I: Organza, Tüll; A II, B II, D: Satin; C: Sweatshirtstoffe.

**Tissus conseillés:** A I, B I: organza, tulle; A II, B II, D: satin; C: tissu molletonné.

**Recommended fabrics:** A I, B I: organza, tulle; A II, B II, D: satin; C: sweatshirting.

## ROBE



## DE BAPTEME • CHRISTENING DRESS • VESTIDO PARA BAUTIZO

Größen Tailles • Sizes	Eur. US	114 cm / 45 ins					140 cm / 55 ins				
		62 3 M	68 6 M	74 9 M	80 12 M	86 18 M	62 3 M	68 6 M	74 9 M	80 12 M	86 18 M
A I	m yds	2.30 2 <sup>5</sup> / <sub>8</sub>	2.30 2 <sup>5</sup> / <sub>8</sub>	2.40 2 <sup>5</sup> / <sub>8</sub>	2.50 2 <sup>3</sup> / <sub>4</sub>	2.60 2 <sup>7</sup> / <sub>8</sub>	2.05 2 <sup>1</sup> / <sub>8</sub>	2.05 2 <sup>1</sup> / <sub>8</sub>	2.10 2 <sup>1</sup> / <sub>8</sub>	2.15 2 <sup>1</sup> / <sub>2</sub>	2.20 2 <sup>1</sup> / <sub>2</sub>
A II	m yds	1.55 1 <sup>3</sup> / <sub>4</sub>	1.55 1 <sup>3</sup> / <sub>4</sub>	1.90 2 <sup>1</sup> / <sub>8</sub>	1.95 2 <sup>1</sup> / <sub>4</sub>	2.05 2 <sup>5</sup> / <sub>8</sub>	1.55 1 <sup>3</sup> / <sub>4</sub>	1.55 1 <sup>3</sup> / <sub>4</sub>	1.65 1 <sup>7</sup> / <sub>8</sub>	1.75 2	1.80 2
B I	m yds	0.80 7 <sup>7</sup> / <sub>8</sub>	0.80 7 <sup>7</sup> / <sub>8</sub>	0.85 1	0.90 1	1.25 1 <sup>1</sup> / <sub>2</sub>	0.80 7 <sup>7</sup> / <sub>8</sub>	0.80 7 <sup>7</sup> / <sub>8</sub>	0.85 1	0.90 1	0.90 1
B II	m yds	0.75 7 <sup>7</sup> / <sub>8</sub>	0.75 7 <sup>7</sup> / <sub>8</sub>	0.80 7 <sup>7</sup> / <sub>8</sub>	0.85 1	0.90 1	0.55 3 <sup>3</sup> / <sub>4</sub>	0.55 3 <sup>3</sup> / <sub>4</sub>	0.75 7 <sup>7</sup> / <sub>8</sub>	0.80 7 <sup>7</sup> / <sub>8</sub>	0.80 7 <sup>7</sup> / <sub>8</sub>
C	m yds	0.55 3 <sup>3</sup> / <sub>4</sub>	0.55 3 <sup>3</sup> / <sub>4</sub>	0.55 3 <sup>3</sup> / <sub>4</sub>	0.65 7 <sup>7</sup> / <sub>8</sub>	0.65 7 <sup>7</sup> / <sub>8</sub>	0.35 1 <sup>1</sup> / <sub>2</sub>	0.35 1 <sup>1</sup> / <sub>2</sub>	0.35 1 <sup>1</sup> / <sub>2</sub>	0.40 1 <sup>1</sup> / <sub>2</sub>	0.40 1 <sup>1</sup> / <sub>2</sub>
D	m yds	0.50 5 <sup>5</sup> / <sub>8</sub>	0.50 5 <sup>5</sup> / <sub>8</sub>	0.50 5 <sup>5</sup> / <sub>8</sub>	0.50 5 <sup>5</sup> / <sub>8</sub>	0.50 5 <sup>5</sup> / <sub>8</sub>	0.50 5 <sup>5</sup> / <sub>8</sub>	0.50 5 <sup>5</sup> / <sub>8</sub>	0.50 5 <sup>5</sup> / <sub>8</sub>	0.50 5 <sup>5</sup> / <sub>8</sub>	0.50 5 <sup>5</sup> / <sub>8</sub>

→ mit Richtung  
avec sens • with nap

9804