

Größen • Tailles • Sizes
Eur.: **92 - 116**
US: **2 - 6**

A



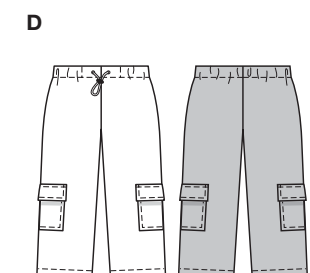
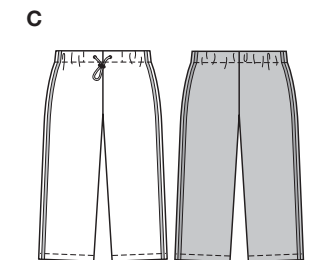
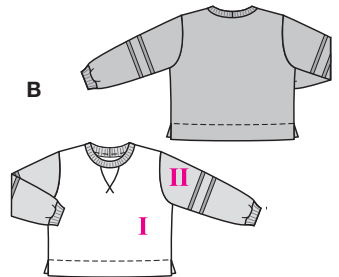
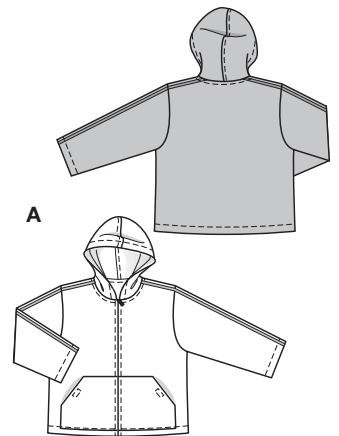
B



C



D



KOMBINATION



sehr leicht, très facile,
very easy, muy fácil.

A: weit, ample, loose fitting.

BCD: normal weit,
semi-ajusté, semi-fitted.

Stoffempfehlung: A: Fleece
mit Abseite; BC: Jersey,
Fleece; D: Baumwollstoffe.

Tissus conseillés: A: fibre
duveteuses avec face envers;
BC: jersey, fibre duveteuses;
D: tissu en coton.

Recommended fabrics:

A: reversible fiber pile; BC:
jersey, fiber pile; D: cottons.

COORDONNEES • COORDINATES • COORDINADOS

Größen Tailles • Sizes	Eur. US	114 cm / 45 ins					140 cm / 55 ins				
		92 2	98 3	104 4	110 5	116 6	92 2	98 3	104 4	110 5	116 6
A	m yds	0.95 1 1/8 →	1.15 1 3/8 →	1.25 1 1/2 →	1.25 1 1/2 →	1.35 1 5/8 →	0.85 1 →	0.90 1 →	1.00 1 1/8 →	1.00 1 1/8 →	1.05 1 1/4 →
B I	m yds	0.50 5/8 →	0.50 5/8 →	0.55 3/4 →	0.55 3/4 →	0.55 3/4 →	0.50 5/8 →	0.50 5/8 →	0.55 3/4 →	0.55 3/4 →	0.55 3/4 →
B II	m yds	0.30 3/8 →	0.35 1/2 →	0.40 1/2 →	0.40 1/2 →	0.40 1/2 →	0.30 3/8 →	0.35 1/2 →	0.40 1/2 →	0.40 1/2 →	0.40 1/2 →
C	m yds	0.65 7/8 →	0.70 7/8 →	0.75 7/8 →	0.75 7/8 →	0.80 7/8 →	0.65 7/8 →	0.70 7/8 →	0.75 7/8 →	0.75 7/8 →	0.80 7/8 →
D	m yds	0.80 7/8 →	0.85 1 →	1.00 1 1/8 →	1.00 1 1/8 →	1.05 1 1/4 →	0.65 7/8 →	0.70 7/8 →	0.75 7/8 →	0.75 7/8 →	0.80 7/8 →

→ mit Richtung • avec sens • with nap

9822

