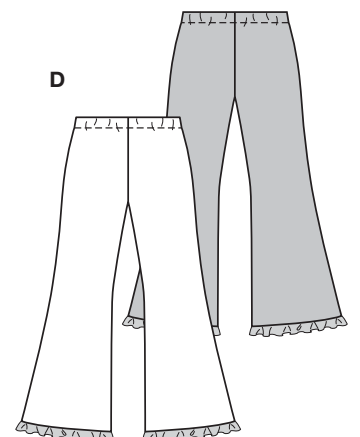
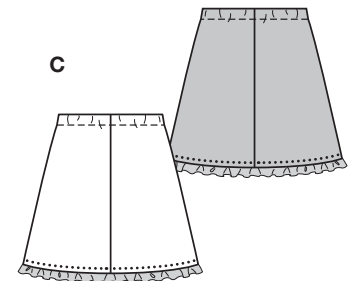
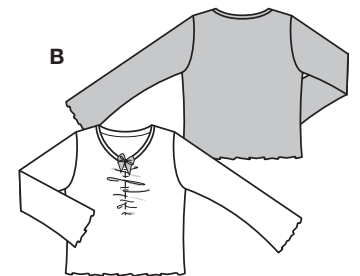
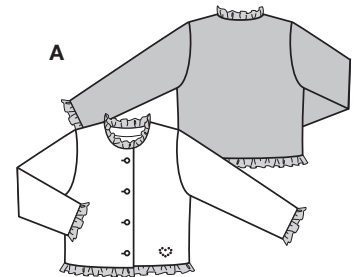


Größen • Tailles • Sizes  
Eur.: **92 - 116**  
US: **2 - 6**



**KOMBINATION**

sehr leicht, très facile, very easy, muy fácil.

ABCD: normal weit, semi-ajusté, semi-fitted.

Stoffempfehlung:  
A: Fleece; B: Nickstoffe;  
CD: Baumwollstoffe, Kord.

Tissus conseillés:  
A: fibre duveteuses; B:  
velours éponge; CD: tissus  
en coton, velours côtelé.

Recommended fabrics:  
A: fiber pile; B: terry velour;  
CD: cottons, corduroy.

**COORDONNEES • COORDINATES • COORDINADOS**

Größen Tailles • Sizes	Eur. US	114 cm / 45 ins					140 cm / 55 ins				
		92 2	98 3	104 4	110 5	116 6	92 2	98 3	104 4	110 5	116 6
A	m yds	0.75 7/8	0.75 7/8	0.85 1	0.85 1	0.85 1	0.60 3/4	0.60 3/4	0.85 1	0.85 1	0.85 1
B	m yds	0.75 7/8	0.75 7/8	0.85 1	0.85 1	0.90 1	0.45 5/8	0.45 5/8	0.45 5/8	0.45 5/8	0.45 5/8
C	m yds	0.80 7/8	0.80 7/8	0.90 1	0.90 1	0.95 1 1/8	0.70 7/8	0.70 7/8	0.80 7/8	0.80 7/8	0.80 7/8
D	m yds	0.70 7/8	0.70 7/8	0.80 7/8	0.80 7/8	0.80 7/8	0.70 7/8	0.70 7/8	0.80 7/8	0.80 7/8	0.80 7/8

→ mit Richtung • avec sens • with nap

★ ohne Richtung • sans sens • without nap

**9826**