

Größen • Tailles • Sizes  
 Eur.: **74 - 98**  
 US: **9M - 3**



C



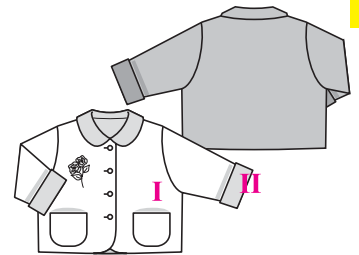
B



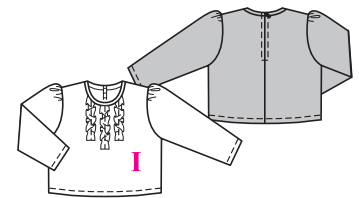
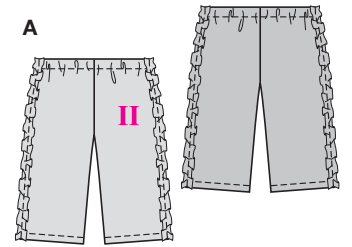
A



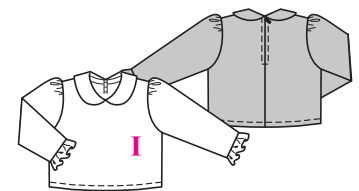
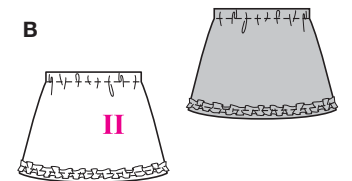
A



A



B



C



## KOMBINATION



leicht, facile, easy, fácil.

ABC: normal weit, semi-ajusté, semi-fitted.

**Stoffempfehlung:** Fleece, Babykord, Baumwollstoffe; BC: Nickstoffe.

**Tissus conseillés:** fibre duveteuses, côtelé milleraies, tissus en coton;

BC: velours éponge.

**Recommended fabrics:** fiber pile, needle cord, cottons; BC: terry velour.

→ mit Richtung  
avec sens • with nap

## COORDONNEES • COORDINATES • COORDINADOS

Größen Tailles • Sizes	Eur. US	114 cm / 45 ins					140 cm / 55 ins				
		74 9 M	80 12 M	86 18 M	92 2	98 3	74 9 M	80 12 M	86 18 M	92 2	98 3
A I	m yds	0.75 7/8	0.75 7/8	0.80 7/8	0.85 1	0.85 1	0.60 3/4	0.60 3/4	0.65 7/8	0.70 7/8	0.70 7/8
A II	m yds	1.25 1 1/2	1.25 1 1/2	1.30 1 1/2	1.40 1 5/8	1.50 1 3/4	1.10 1 1/4	1.10 1 1/4	1.15 1 1/8	1.20 1 1/8	1.30 1 1/2
B I	m yds	0.70 7/8	0.70 7/8	0.75 7/8	0.75 7/8	0.80 7/8	0.70 7/8	0.70 7/8	0.75 7/8	0.75 7/8	0.80 7/8
B II	m yds	0.55 3/4	0.55 3/4	0.55 3/4	0.60 3/4	0.60 3/4	0.55 3/4	0.55 3/4	0.55 3/4	0.60 3/4	0.60 3/4
C I	m yds	0.55 3/4	0.55 3/4	0.65 7/8	0.70 7/8	0.70 7/8	0.50 5/8	0.50 5/8	0.50 5/8	0.55 3/4	0.55 3/4
C II	m yds	0.80 7/8	0.80 7/8	0.80 7/8	0.85 1	0.90 1	0.80 7/8	0.80 7/8	0.80 7/8	0.85 1	0.90 1
C Garniturstoff Tissu garniture Contrasting fabric	m yds	0.20 1/4	0.20 1/4	0.20 1/4	0.20 1/4	0.20 1/4	0.20 1/4	0.20 1/4	0.20 1/4	0.20 1/4	0.20 1/4

9829

