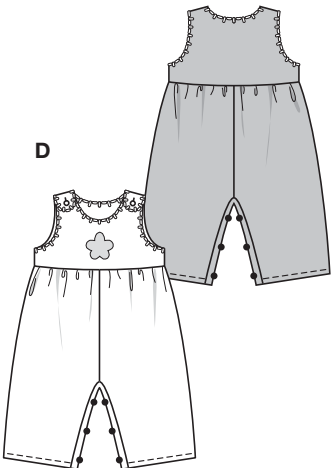
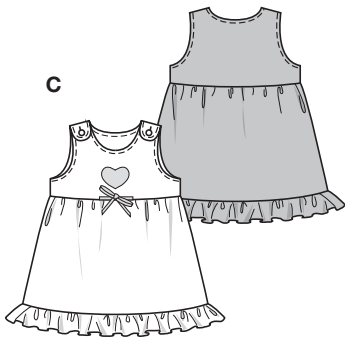
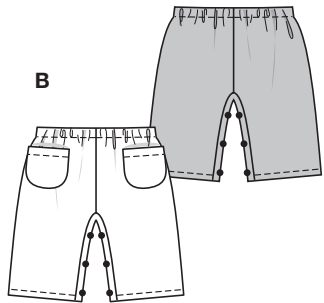
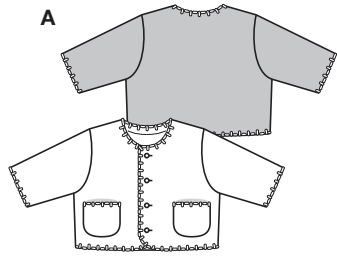


Größen • Tailles • Sizes
 Eur.: **56 - 80**
 US: **1M - 12M**



KOMBINATION



leicht, facile, easy, fácil.

ABCDE: normal weit, semi-ajusté, semi-fitted.

Stoffempfehlung: Fleece, Baumwollstoffe, Sweatshirtstoffe.

Tissus conseillés: fibre duveteuses, tissus en coton, tissu molletonné.

Recommended fabrics: fiber pile, cottons, sweatshirting.

→ mit Richtung
 avec sens • with nap
 ★ ohne Richtung
 sans sens • without nap

COORDONNEES • COORDINATES • COORDINADOS

Größen Tailles • Sizes	Eur. US	114 cm / 45 ins					140 cm / 55 ins				
		56 1 M	62 3 M	68 6 M	74 9 M	80 12 M	56 1 M	62 3 M	68 6 M	74 9 M	80 12 M
A	m yds	0.50 5/8	0.60 3/4	0.60 3/4	0.65 7/8	0.65 7/8	0.35 1/2	0.40 1/2	0.40 1/2	0.50 5/8	0.50 5/8
B	m yds	0.45 5/8	0.55 3/4	0.55 3/4	0.65 7/8	0.65 7/8	0.40 1/2	0.45 5/8	0.45 5/8	0.55 3/4	0.55 3/4
C	m yds	0.70 7/8	0.80 7/8	0.80 7/8	0.95 1 1/8	0.95 1 1/8	0.50 5/8	0.65 7/8	0.65 7/8	0.80 7/8	0.80 7/8
D	m yds	0.80 7/8	0.90 1	0.90 1	1.05 1 1/4	1.05 1 1/4	0.60 3/4	0.70 7/8	0.70 7/8	0.80 7/8	0.80 7/8
E	m yds	0.45 5/8	0.45 5/8	0.45 5/8	0.45 5/8	0.45 5/8	0.45 5/8	0.45 5/8	0.45 5/8	0.45 5/8	0.45 5/8

9831