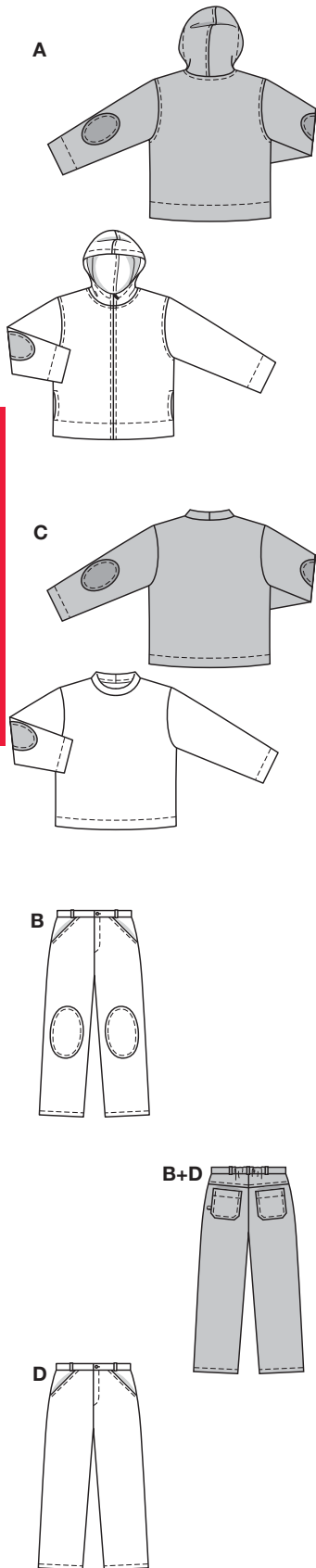


Größen • Tailles • Sizes
 Eur.: **122 - 164**
 US: **7 - 14**



KOMBINATION



leicht, facile, easy, fácil.

ABD: normal weit, semi-ajusté, semi-fitted;

C: sehr weit, très ample,

very loose fitting.

Stoffempfehlung:

A: Fleece; BD + Garniturstoff

A: Kord, Jeansstoffe;

C: Sweatshirtstoffe.

Tissus conseillés: A: fibre duveteuses; BD + Tissu garniture A: velours côtelé, tissu jean; C: tissu molletonné.

Recommended fabrics: A: fiber pile; BD + Contrasting fabric A: corduroy, denim; C: sweatshirting.

COORDONNEES • COORDINATES • COORDINADOS

Größen Tailles • Sizes	Eur. US	114 cm / 45 ins							140 cm / 55 ins								
		122 7	128 8	134 9	140 10	146 11	152 12	158 13	164 14	122 7	128 8	134 9	140 10	146 11	152 12	158 13	164 14
A	m yds	1.55 1¾	1.55 1¾	1.60 1¾	1.65 1⅞	1.85 2⅛	1.90 2⅛	2.40 2⅝	2.40 2⅝	1.20 1⅜	1.20 1⅜	1.25 1½	1.40 1⅝	1.50 1¾	1.55 1¾	1.65 1⅞	1.65 1⅞
A Garniturstoff Tissu garniture Contrasting fabric	m yds	0.25 ⅜	0.25 ⅜	0.25 ⅜	0.25 ⅜	0.25 ⅜	0.25 ⅜	0.25 ⅜	0.25 ⅜	0.25 ⅜	0.25 ⅜	0.25 ⅜	0.25 ⅜	0.25 ⅜	0.25 ⅜	0.25 ⅜	0.25 ⅜
BD	m yds	1.25 1½	1.25 1½	1.30 1½	1.35 1⅝	1.80 2	1.85 2⅛	1.95 2¼	1.95 2¼	1.20 1⅜	1.20 1⅜	1.25 1½	1.30 1½	1.35 1⅝	1.40 1⅝	1.45 1¾	1.45 1¾
C	m yds	1.15 1⅜	1.15 1⅜	1.20 1⅜	1.25 1½	1.30 1½	1.40 1⅝	1.50 1¾	1.50 1¾	1.10 1¼	1.10 1¼	1.15 1⅜	1.20 1⅜	1.25 1½	1.30 1½	1.40 1⅝	1.40 1⅝

→ mit Richtung • avec sens • with nap