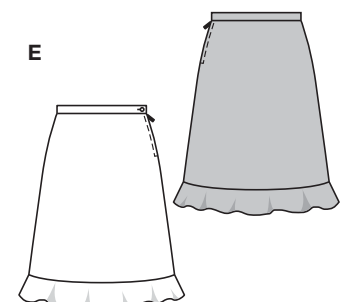
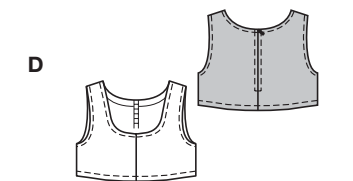
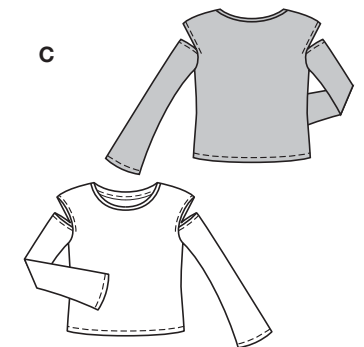
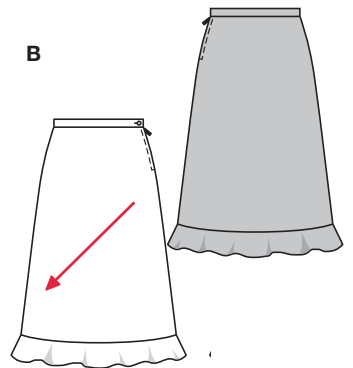
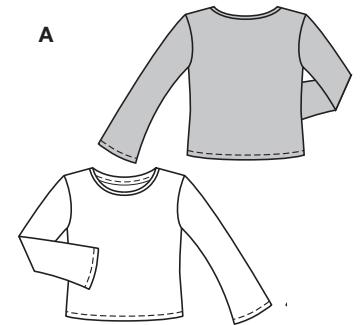


Größen • Tailles • Sizes
 Eur. : **122 - 164**
 US : **7 - 14jun.**



KOMBINATION



leicht, facile, easy, fácil.

AD: normal weit, semi-ajusté, semi-fitted;

BCE: eng anliegend, très ajusté, close fitting.

Stoffempfehlung: AC nur elastische Stoffe: Jersey, Strickstoffe; BDE: Satin, Fleece.

Tissus conseillés: AC uniquement tissus élastiques: jersey, tissu tricot; BDE: satin, fibre duveteuses.

Recommended fabrics: AC stretchable fabrics only: jersey, sweater knits; BDE: satin, fiber pile.

COORDONNEES • COORDINATES • COORDINADOS

Größen Tailles • Sizes	Eur. US	114 cm / 45 ins										140 cm / 55 ins					
		122 7	128 8	134 9	140 10	146 11	152 12	158 13jun.	164 14jun.	122 7	128 8	134 9	140 10	146 11	152 12	158 13jun.	164 14jun.
A	m yds	0.95 1 1/8	1.00 1 1/8	1.05 1 1/4	1.10 1 1/4	1.15 1 3/8	1.15 1 3/8	1.20 1 3/8	1.25 1 1/2	0.55 3/4	0.70 7/8	0.90 1	0.90 1	1.00 1 1/8	1.05 1 1/4	1.10 1 1/4	1.25 1 1/2
B	m yds	0.95 1 1/8	1.05 1 1/4	1.10 1 1/4	1.20 1 3/8	1.35 1 3/8	1.40 1 3/8	1.50 1 3/4	1.60 1 3/4	0.80 7/8	0.85 1	0.95 1 1/8	1.00 1 1/8	1.10 1 1/4	1.20 1 3/8	1.25 1 1/2	1.35 1 3/8
C	m yds	0.90 1	0.95 1 1/8	1.00 1 1/8	1.05 1 1/4	1.10 1 1/4	1.15 1 3/8	1.15 1 3/8	1.20 1 3/8	0.55 3/4	0.55 3/4	0.55 3/4	0.65 7/8	0.80 7/8	1.15 1 3/8	1.15 1 3/8	1.20 1 3/8
D	m yds	0.35 1/2	0.35 1/2	0.35 1/2	0.35 1/2	0.40 1/2	0.40 1/2	0.40 1/2	0.45 5/8	0.35 1/2	0.35 1/2	0.35 1/2	0.35 1/2	0.40 1/2	0.40 1/2	0.40 1/2	0.45 5/8
E	m yds	0.75 7/8	0.80 7/8	0.85 1	0.90 1	0.95 1 1/8	1.05 1 1/4	1.10 1 1/4	1.40 1 3/8	0.75 7/8	0.80 7/8	0.85 1	0.90 1	0.95 1 1/8	0.95 1 1/8	1.00 1 1/8	1.05 1 1/4

→ mit Richtung • avec sens • with nap

★ ohne Richtung • sans sens • without nap

9861