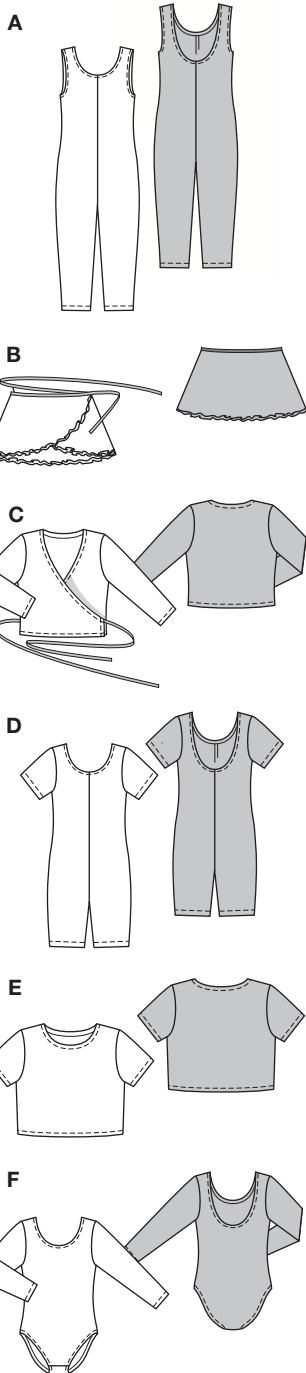


Größen • Tailles • Sizes
 Eur.: **98 - 128**
 US: **3 - 8**



STRETCH



ELASTIC

OVERLOCK



OVERLOCK

KOMBINATION



leicht, facile, easy, fácil.

ADEF: eng anliegend, très ajusté, close fitting.

BC: körpernah, ajusté, fitted.

Stoffempfehlung:

Nur bi-elastische Stoffe.

Tissus conseillés:

uniquement matières bi-extensibles.

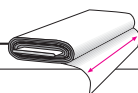
Recommended fabrics: use bi-stretchable fabrics only.

→ mit Richtung
avec sens • with nap

★ ohne Richtung
sans sens • without nap

COORDONNEES • COORDINATES • COORDINADOS

Größen Tailles • Sizes	Eur. US	114 cm / 45 ins						140 cm / 55 ins					
		98 3	104 4	110 5	116 6	122 7	128 8	98 3	104 4	110 5	116 6	122 7	128 8
A	m yds	0.70 7/8	0.80 7/8	0.80 7/8	0.90 1	0.90 1	0.95 1 1/8	0.70 7/8	0.80 7/8	0.80 7/8	0.90 1	0.90 1	0.95 1 1/8
B	m yds	0.60 3/4	0.80 7/8	0.80 7/8	0.85 1	0.85 1	0.90 1	0.55 3/4	0.60 3/4	0.60 3/4	0.65 7/8	0.65 7/8	0.65 7/8
C	m yds	0.50 5/8	0.60 3/4	0.60 3/4	0.70 7/8	0.70 7/8	0.75 7/8	0.40 1/2	0.45 5/8	0.45 5/8	0.55 3/4	0.55 3/4	0.55 3/4
D	m yds	0.55 3/4	0.65 7/8	0.65 7/8	0.70 7/8	0.70 7/8	0.70 7/8	0.55 3/4	0.65 7/8	0.65 7/8	0.70 7/8	0.70 7/8	0.70 7/8
E	m yds	0.35 1/2	0.40 1/2	0.40 1/2	0.45 5/8	0.45 5/8	0.60 3/4	0.35 1/2	0.40 1/2	0.40 1/2	0.45 5/8	0.45 5/8	0.45 5/8
F	m yds	0.50 5/8	0.55 3/4	0.55 3/4	0.80 7/8	0.80 7/8	0.80 7/8	0.50 5/8	0.55 3/4	0.55 3/4	0.60 3/4	0.60 3/4	0.60 3/4



9914