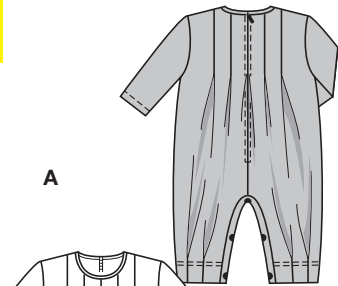
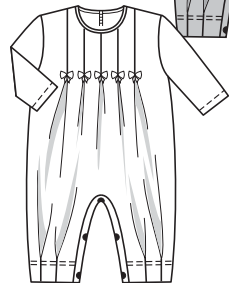


Größen • Tailles • Sizes

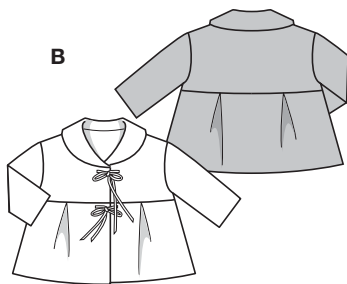
Eur.: **56 - 80**
US: **1M - 12M**



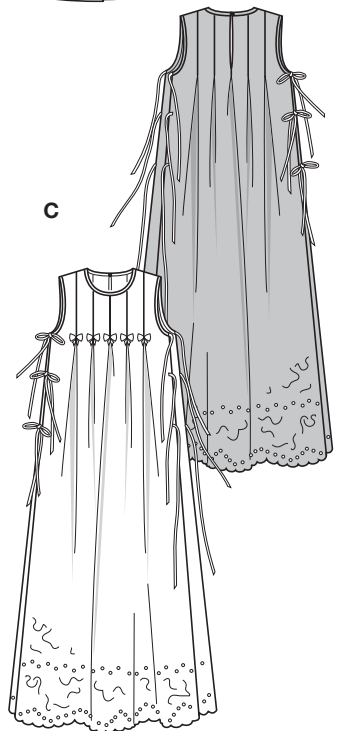
A



B



C



D



TAUFGKOMBINATION COORDONNE DE BAPTEME



mittel, moins facile, average, dificultad media.

ABCD: normal weit, semi-ajusté, semi-fitted.

Stoffempfehlung :

AD: Nickistoffe, Jersey;
BD: Organza-Doppelgewebe;
C: Spitze mit einseitiger Bogenkante.

Tissus conseillés:

AD: velours éponge, jersey;
BD: organza double-face;
C: tissu dentelle avec un bord festonné.

Recommended fabrics: AD: terry velour, jersey; BD: double-faced organza; C: lace fabric with single edge scalloped.

CHRISTENING COORDINATES • COORDINADOS PARA BAUTIZO

Größen Tailles • Sizes	Eur. US	114 cm / 45 ins					140 cm / 55 ins				
		56 1 M	62 3 M	68 6 M	74 9 M	80 12 M	56 1 M	62 3 M	68 6 M	74 9 M	80 12 M
A	m yds	0.85 1	1.00 1 1/8	1.10 1 1/4	1.20 1 3/8	1.35 1 5/8	0.80 7/8	0.85 1	0.95 1 1/8	1.00 1 1/8	1.10 1 1/4
B	m yds	0.70 7/8	0.70 7/8	0.75 7/8	0.80 7/8	0.80 7/8	0.65 7/8	0.65 7/8	0.65 7/8	0.70 7/8	0.70 7/8
B Futter • Doublure Lining	m yds	0.40 1/2	0.45 5/8	0.45 5/8	0.50 5/8	0.55 3/4	0.40 1/2	0.40 1/2	0.40 1/2	0.45 5/8	0.45 5/8
C	m yds	1.45 1 3/4	1.45 1 3/4	1.50 1 3/4	1.55 1 3/4	1.55 1 3/4	1.45 1 3/4	1.45 1 3/4	1.50 1 3/4	1.55 1 3/4	1.55 1 3/4
D	m yds	0.50 5/8	0.50 5/8	0.55 3/4	0.60 3/4	0.60 3/4	0.50 5/8	0.50 5/8	0.55 3/4	0.60 3/4	0.60 3/4

→ mit Richtung • avec sens • with nap

9944