



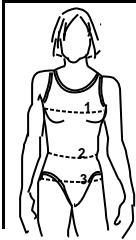
2329

22 tailles
sizes

Camisole, tanga à taille basse et choix de culottes - Tank top, low-rise thong and choice of panties

Camisole longue avec bande aux emmanchures et à l'encolure. **Tanga** (tailles 8 ans et plus) à taille basse avec élastique aux cuisses et à la taille. **Culotte bikini** à taille haute ou basse avec élastique à taille et aux cuisses. **Culotte à la cuisse** avec élastique à la taille et ourlet aux cuisses pour un plus grand confort. *Long tank top with armhole and neckline binding. Low-rise thong (available for sizes 8 and up) with elastic at leg opening and At waist. Bikini panties with high or low waist and elastic at waist and leg openings. Boycut hipster with low or high waist, elastic at waist and hem at leg opening for more comfort.*

FILLES - GIRLS



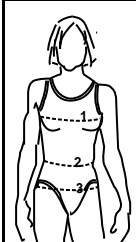
| | | | | | | | | | | | | |
|--------------------------------------|----|----|-----|-----|-----|-----|-----|-----|-----|-----|-----|-----|
| Âge approximatif - Approximate age | 2 | 3 | 4 | 5 | 6 | 7 | 8 | 10 | 11 | 12 | 13 | 14 |
| Tailles européennes - European sizes | 92 | 98 | 104 | 112 | 119 | 127 | 135 | 142 | 146 | 150 | 152 | 155 |
| Tailles Jalie - Jalie sizes | F | G | H | I | J | K | L | M | N | O | P | Q |

TABLEAU DE MESURES - MEASUREMENT CHART

| | | | | | | | | | | | | | | |
|---|-------------------------|----|--------|--------|--------|--------|--------|--------|--------|--------|--------|--------|--------|--------|
| 1 | Tour de poitrine - Bust | " | 20 7/8 | 22 | 22 7/8 | 24 | 25 | 26 | 26 7/8 | 28 | 29 1/8 | 30 | 31 | 31 7/8 |
| | | cm | 53 | 56 | 58 | 61 | 63 | 66 | 68 | 71 | 74 | 76 | 79 | 81 |
| 2 | Tour de taille - Waist | " | 20 1/8 | 20 1/2 | 21 2/8 | 21 5/8 | 22 1/2 | 22 7/8 | 23 5/8 | 24 6/8 | 25 2/8 | 25 2/4 | 26 | 26 3/8 |
| | | cm | 51 | 52 | 54 | 55 | 57 | 58 | 60 | 63 | 64 | 65 | 66 | 67 |
| 3 | Tour des hanches - Hips | " | 21 1/2 | 22 1/2 | 23 | 24 1/2 | 25 1/2 | 26 1/2 | 27 1/2 | 28 1/2 | 30 | 31 | 32 1/2 | 34 |
| | | cm | 54 | 57 | 59 | 62 | 65 | 67 | 70 | 73 | 76 | 79 | 83 | 86 |

| Tissus - Fabrics | | Largeur - Width | | Quantité de tissu requise - Required yardage | | | | | | | | | | | | |
|---|-----------------------|-----------------|------|--|------|------|------|------|------|------|------|------|------|------|-----|-----|
| Dentelle extensible, tissu avec spandex ou Lycra® extensible dans les deux sens | camisole tank top | 45" | yd | 1/2 | 1/2 | 1/2 | 1/2 | 1/2 | 1/2 | 1/2 | 1/2 | 3/4 | 3/4 | 3/4 | 3/4 | 3/4 |
| | 115 cm | m | 0.45 | 0.45 | 0.50 | 0.50 | 0.50 | 0.55 | 0.55 | 0.60 | 0.60 | 0.60 | 0.65 | 0.65 | | |
| Two-way stretch lace or fabric with spandex or Lycra® | taille basse ou tanga | 45" | yd | 1/4 | 1/4 | 1/4 | 1/4 | 1/4 | 1/4 | 1/4 | 1/4 | 1/2 | 1/2 | 1/2 | | |
| | 115 cm | m | 0.25 | 0.25 | 0.25 | 0.25 | 0.30 | 0.30 | 0.30 | 0.30 | 0.30 | 0.35 | 0.35 | 0.35 | | |
| | taille haute | 45" | yd | 3/8 | 3/8 | 3/8 | 3/8 | 3/8 | 3/8 | 3/8 | 3/8 | 1/2 | 1/2 | 1/2 | | |
| | 115 cm | m | 0.35 | 0.35 | 0.35 | 0.35 | 0.35 | 0.40 | 0.40 | 0.40 | 0.40 | 0.45 | 0.45 | 0.45 | | |
| doublure (tricot de coton) lining (cotton knit fabric) | | 20 cm (8") | | | | | | | | | | | | | | |

FEMMES - WOMEN



| | | | | | | | | | | |
|-----------------------------|----|----|----|----|----|----|----|----|----|-----|
| Tailles USA - US Sizes | 4 | 6 | 8 | 10 | 12 | 14 | 16 | 18 | 20 | 22 |
| | XS | S | S | M | M | L | L | XL | XL | XXL |
| Tailles euro - Euro Sizes | 32 | 34 | 36 | 38 | 40 | 42 | 44 | 46 | 48 | 50 |
| Tailles Jalie - Jalie sizes | R | S | T | U | V | W | X | Y | Z | AA |

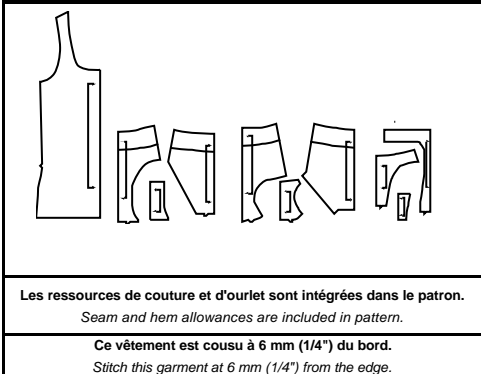
TABLEAU DE MESURES - MEASUREMENT CHART

| | | | | | | | | | | | | |
|---|-------------------------|----|----|----|----|-----|-----|-----|-----|-----|-----|-----|
| 1 | Tour de poitrine - Bust | " | 33 | 34 | 36 | 38 | 40 | 42 | 44 | 46 | 48 | 50 |
| | | cm | 84 | 86 | 91 | 96 | 101 | 107 | 112 | 117 | 122 | 128 |
| 2 | Tour de taille - Waist | " | 27 | 27 | 29 | 31 | 33 | 35 | 37 | 39 | 41 | 43 |
| | | cm | 68 | 69 | 74 | 79 | 84 | 89 | 95 | 100 | 105 | 110 |
| 3 | Tour des hanches - Hips | " | 35 | 36 | 38 | 41 | 43 | 44 | 46 | 49 | 51 | 53 |
| | | cm | 89 | 92 | 97 | 103 | 108 | 113 | 118 | 124 | 129 | 134 |

| Tissus - Fabrics | | Largeur - Width | | Quantité de tissu requise - Required yardage | | | | | | | | | | | |
|---|-----------------------|-----------------|------|--|------|------|------|------|------|------|------|------|------|-----|--|
| Dentelle extensible, tissu avec spandex ou Lycra® extensible dans les deux sens | camisole tank top | 45" | yd | 3/4 | 3/4 | 3/4 | 3/4 | 3/4 | 7/8 | 7/8 | 7/8 | 7/8 | 7/8 | 7/8 | |
| | 115 cm | m | 0.65 | 0.70 | 0.70 | 0.70 | 0.70 | 0.75 | 0.75 | 0.75 | 0.75 | 0.75 | 0.75 | | |
| Two-way stretch lace or fabric with spandex or Lycra® | taille basse ou tanga | 45" | yd | 3/8 | 3/8 | 3/8 | 3/8 | 3/8 | 3/8 | 1/2 | 1/2 | 1/2 | 1/2 | | |
| | 115 cm | m | 0.35 | 0.35 | 0.35 | 0.35 | 0.40 | 0.40 | 0.45 | 0.45 | 0.50 | 0.50 | | | |
| | taille haute | 45" | yd | 1/2 | 1/2 | 1/2 | 1/2 | 1/2 | 1/2 | 5/8 | 5/8 | 5/8 | 5/8 | | |
| | 115 cm | m | 0.45 | 0.45 | 0.50 | 0.50 | 0.50 | 0.50 | 0.55 | 0.55 | 0.60 | 0.60 | | | |
| doublure (tricot de coton) lining (cotton knit fabric) | | 20 cm (8") | | | | | | | | | | | | | |

Pièces du patron

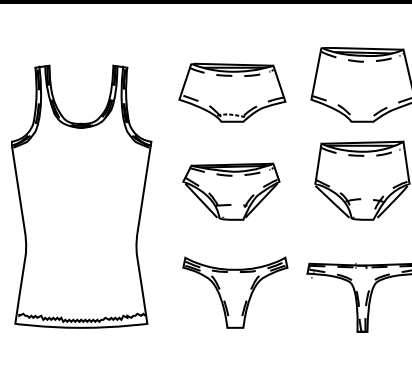
Pattern pieces



Les ressources de couture et d'ourlet sont intégrées dans le patron.
Seam and hem allowances are included in pattern.
Ce vêtement est cousu à 6 mm (1/4") du bord.
Stitch this garment at 6 mm (1/4") from the edge.

Articles de mercerie

Notions



| | |
|-----------------------|-----------------------|
| Élastique / Elastic | 1cm (3/8") |
| Taille - Tous modèles | Waist - All styles |
| F - S = | 60 cm (24") |
| T - V = | 75 cm (30") |
| W - AA = | 100 cm (40") |
| Cuisses - Bikini | Leg openings - Bikini |
| F - O = | 75 cm (30") |
| P - V = | 100 cm (40") |
| W - AA = | 125 cm () |
| Élastique / Elastic | 6 mm (1/4") |
| Tanga - cuisses | Thong - leg openings |
| L - S = | 120 cm (48") |
| T - W = | 150 cm (60") |
| X - AA = | 180 cm (70") |

| | |
|---|--|
| Votre tissu doit étirer d'ici Your fabric should stretch from here | AU MOINS JUSQU'ICI TO AT LEAST HERE |
|---|--|

code de prix
price code

