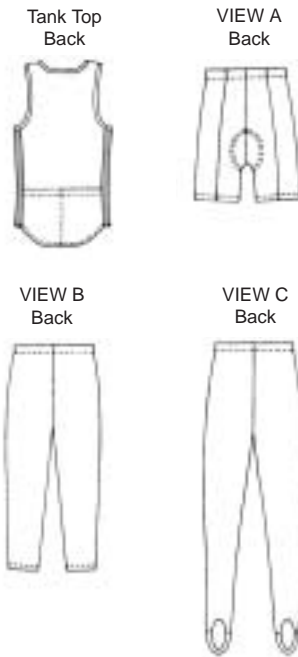


Men's Tank Top has patch pocket on back. Neckline and armholes are finished with self-fabric binding. Side panels are from contrast fabric. Tights have elastic in casing at waist. View B are hemmed; View C have stirrups. Bicycle shorts have padding at seat.



KWIK•SEW®
1727 price

MEN'S TANK TOP, TIGHTS & BICYCLE SHORTS
 Sizes: S-M-L-XL
TIGHTS, SHORTS AND SIDE PANELS OF TANK TOP DESIGNED FOR TWO-WAY STRETCH FABRIC WITH 70% STRETCH
 Suggested Fabrics: Fabric with spandex or Lycra®, swimsuit fabric
TANK TOP DESIGNED FOR STRETCH KNITS ONLY WITH 18% STRETCH
 Suggested Fabrics: Single knit

Size	S	M	L	XL	
Inside Leg to Floor	32 (81)	32 (81)	32 (81)	32 (81)	" (cm)
Finished Length of Top at Center Back from Natural Neckline	29 1/2 (75)	30 3/8 (77)	31 1/4 (79)	32 (81)	" (cm)
Finished Inside Leg Seam					
View A Shorts	10 (25)	10 (25)	10 (25)	10 (25)	" (cm)
View B Tights	19 (48)	19 (48)	19 (48)	19 (48)	" (cm)
Material Required: Fabric Requirement allows for nap, one-way design or shading. Extra fabric may be needed to match design or for shrinkage.					
Fabric 60" (152 cm) Wide					
Tank Top	1 1/8 (1.05)	1 1/8 (1.05)	1 1/4 (1.15)	1 1/4 (1.15)	yd (m)
Fabric 45" (115 cm) Wide					
Tank Top - Side Panels Contrast Fabric	1/8 (0.15)	1/4 (0.25)	1/4 (0.25)	1/4 (0.25)	yd (m)
View A Shorts	1 3/8 (1.30)	1 3/8 (1.30)	1 3/8 (1.30)	1 3/8 (1.30)	yd (m)
Lining- Nylon Tricot or Nylon Sheer	1/4 (0.25)	1/4 (0.25)	1/4 (0.25)	1/4 (0.25)	yd (m)
Polyester Fleece for Padding	1/4 (0.25)	1/4 (0.25)	1/4 (0.25)	1/4 (0.25)	yd (m)
View B or C Tights	1 1/4 (1.15)	1 3/8 (1.30)	1 1/2 (1.40)	1 5/8 (1.50)	yd (m)
Notions: Thread. SHORTS VIEW A: 1 yd (0.95 m) of 3/4" (2 cm) wide elastic. VIEW B and C TIGHTS: 1 yd (0.95 m) of 1" (2.5 cm) wide elastic.					