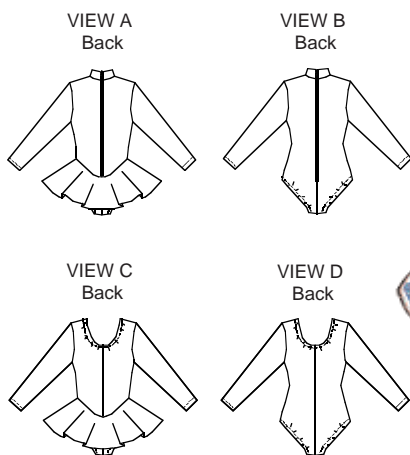




Girls' leotards with long set-in sleeves have leg openings finished with elastic. View A and B have mock turtleneck and an exposed zipper at center back. View C and D have scoop neckline finished with elastic. View A and C have an attached circular skirt.



KWIK•SEW®

2177

2178 ^{price}

KWIK & EASY

GIRLS' LEOTARDS

2177 Sizes: 4-5-6-7

2178 Sizes: 8-10-12-14

DESIGNED FOR TWO-WAY STRETCH FABRIC WITH 75% STRETCH

Suggested Fabrics: Fabric with spandex or Lycra®, swimsuit fabric, cotton Lycra®

Size	4	5	6	7	8	10	12	14	
Material Required: Extra fabric may be needed to match design or for shrinkage.									
Fabric 60" (152 cm) Wide with the Greatest Degree of Stretch on Crosswise Grain									
View A	7/8 (0.80)	7/8 (0.80)	1 (0.95)	1 (0.95)	1 1/8 (1.05)	1 1/8 (1.05)	1 1/4 (1.15)	1 1/4 (1.15)	yd (m)
View B	5/8 (0.60)	3/4 (0.70)	3/4 (0.70)	3/4 (0.70)	3/4 (0.70)	3/4 (0.70)	7/8 (0.80)	7/8 (0.80)	yd (m)
View C	7/8 (0.80)	7/8 (0.80)	1 (0.95)	1 (0.95)	1 1/8 (1.05)	1 1/8 (1.05)	1 1/4 (1.15)	1 1/4 (1.15)	yd (m)
View D	5/8 (0.60)	3/4 (0.70)	3/4 (0.70)	3/4 (0.70)	3/4 (0.70)	3/4 (0.70)	7/8 (0.80)	7/8 (0.80)	yd (m)
Fabric 45" (115 cm) Wide with the Greatest Degree of Stretch on Lengthwise Grain									
View A	1 1/4 (1.15)	1 3/8 (1.30)	1 3/8 (1.30)	1 3/8 (1.30)	1 1/2 (1.40)	1 1/2 (1.40)	1 5/8 (1.50)	1 3/4 (1.60)	yd (m)
View B	3/4 (0.70)	3/4 (0.70)	3/4 (0.70)	3/4 (0.70)	1 (0.95)	1 (0.95)	1 1/4 (1.15)	1 1/4 (1.15)	yd (m)
View C	1 (0.95)	1 1/8 (1.05)	1 1/8 (1.05)	1 1/8 (1.05)	1 1/2 (1.40)	1 1/2 (1.40)	1 5/8 (1.50)	1 3/4 (1.60)	yd (m)
View D	3/4 (0.70)	3/4 (0.70)	3/4 (0.70)	3/4 (0.70)	7/8 (0.80)	7/8 (0.80)	1 (0.95)	1 1/4 (1.15)	yd (m)

Notions: Thread. VIEW A & B: 3/8" (1 cm) wide elastic - 1 yd (0.95 m) for sizes 4-7; 1 1/8 yd (1.05 m) for sizes 8-14, one zipper 14" (35 cm) long for Sizes 4-5-6; 16" (40 cm) for Size 7-8-10; 18" (45 cm) for sizes 12-14. VIEW C & D: 3/8" (1 cm) wide elastic - 1 5/8 yd (1.50 m) for sizes 4-7; 2 yd (1.85 m) for sizes 8-14.