

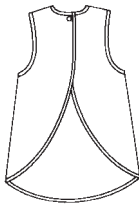


**KWIK•SEW®**  
**2191** price

**APRONS & BAGS**

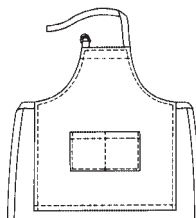
**APRON VIEW A**

**Sizes: S-M-L**  
 Bust sizes: S-36" (90 cm), M-40" (100 cm), L-44" (110 cm)  
 Apron has patch pockets, all outside edges are finished with bias tape, apron has a one button closure at back neckline.  
**Recommended Fabrics:** Light to medium weight woven fabric: Cotton, cotton types.  
**Fabric 60" (152 cm) Wide** - 1 1/8 yd (1.05 m) for sizes S-M, 1 1/4 yd (1.15 m) for size L.  
**Fabric 45" (115 cm) Wide** - 1 3/8 yd (1.30 m) for size S, 1 1/2 yd (1.40 m) for size M, 1 3/4 yd (1.60 m) for size L.  
**Notions:** 7 yd (6.40 m) of double fold bias tape, scrap piece of fusible interfacing, one 5/8" (15 mm) button, thread.



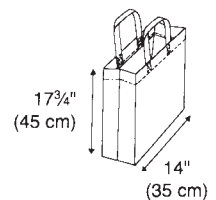
**APRON VIEW B**

**One Size**  
 Apron has pocket, ties and adjustable neck strap.  
**Recommended Fabrics:** Medium to heavy weight woven fabric: Cotton types, twill, canvas, denim.  
**Fabric 60" (152 cm) or 45" (115 cm) Wide** - 1 1/8 yd (1.05 m).  
**Notions:** Two 1" (2.5 cm) wide D-rings, thread



**SHOPPING BAG**

**Recommended Fabrics:** Medium to heavy weight woven fabric: Canvas, denim, nylon fabric.  
**Fabric 60" (152 cm) Wide** - 3/4 yd (0.70 m).  
**Fabric 45" (115 cm) Wide** - 7/8 yd (0.80 m).  
**Notions:** Thread.



**LUNCH BAG**

**Recommended Fabrics:** Light to medium weight woven fabric: Cotton types, nylon fabric.  
**Fabric 60" (152 cm) or 45" (115 cm) Wide** - 1/2 yd (0.50 m).  
**Notions:** 1 1/2" (4 cm) of 3/4" (2 cm) wide Velcro®, optional label or patch, thread.

