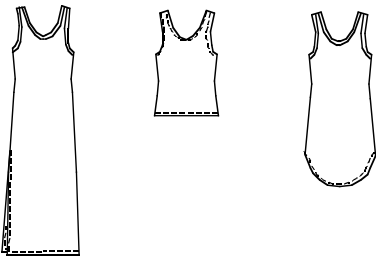




Misses' nightgowns and camisole have scoop neckline. All views are cut on straight grain and neckline and armholes are finished with bias cut bindings. View A ankle length gown has side hemline slit and bindings are on the outside. View B above knee length gown has curved hemline slits, and bindings are on the outside. View C camisole has bindings on the inside.

VIEW A Back VIEW C Back VIEW B Back



KWIK•SEW®
2239 price



MISSSES' NIGHTGOWNS & CAMISOLE

Sizes: XS-S-M-L-XL

DESIGNED FOR LIGHTWEIGHT WOVEN FABRICS

Suggested Fabrics: Batiste, broadcloth, silk, silk like fabrics, crepe de chine, charmeuse

Size	XS	S	M	L	XL	
Finished Length at Center Back from Natural Neckline						
View A	50 3/4 (129)	51 1/4 (130)	51 3/4 (131)	52 1/2 (133)	53 (134)	" (cm)
View B	32 1/2 (83)	33 (84)	33 1/2 (85)	34 (86)	34 3/4 (88)	" (cm)
View C	20 1/2 (52)	21 (53)	21 1/2 (54)	22 (56)	22 3/4 (58)	" (cm)
Material Required: Fabric requirement allows for nap, one-way design or shading. Extra fabric may be needed to match design or for shrinkage.						
Fabric 60" (152 cm) Wide						
View A	2 (1.85)	2 (1.85)	2 1/8 (1.95)	2 1/8 (1.95)	2 1/8 (1.95)	yd (m)
View B	1 1/2 (1.40)	1 1/2 (1.40)	1 5/8 (1.50)	1 5/8 (1.50)	1 5/8 (1.50)	yd (m)
View C	1 1/8 (1.05)	1 1/4 (1.15)	1 1/4 (1.15)	1 1/4 (1.15)	1 3/8 (1.30)	yd (m)
Fabric 45" (115 cm) Wide						
View A	3 (2.75)	3 1/8 (2.85)	3 1/4 (3.00)	3 1/4 (3.00)	3 3/8 (3.10)	yd (m)
View B	2 (1.85)	2 1/8 (1.95)	2 1/8 (1.95)	2 1/4 (2.10)	2 3/8 (2.20)	yd (m)
View C	1 3/8 (1.30)	1 3/8 (1.30)	1 1/2 (1.40)	1 5/8 (1.50)	1 5/8 (1.50)	yd (m)

Notions: Thread.