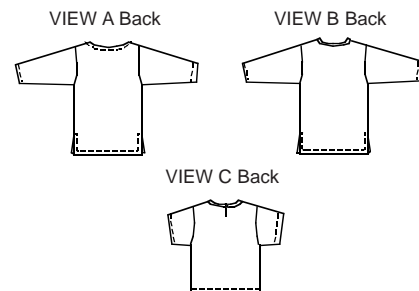




Misses' top and tunics have extended shoulders. View A and B have side hemline slits and long sleeves. View A neckline is finished with self fabric binding on inside. View B V-neckline is finished with self fabric binding on outside. View C has short sleeves, slit opening at back neckline with a loop and button closure, and round neckline is finished with self fabric binding on outside.



KWIK & EASY

KWIK•SEW®
price **2265**

DESIGNED FOR LIGHTWEIGHT WOVEN FABRICS

Suggested Fabrics: Challis, tissue faille, crepe de chine, cotton types, silk, silk types, handkerchief linen

MISSSES' TOP & TUNICS
Sizes: XS-S-M-L-XL

Size	XS	S	M	L	XL	
Finished Length at Center Back						
View A and B	27 (68)	27 1/2 (70)	28 (71)	28 1/2 (72)	29 (73)	" (cm)
View C	23 (58)	23 1/2 (59)	24 (61)	24 1/2 (62)	25 (63)	" (cm)
Material Required: Fabric requirement allows for nap, one-way design or shading. Extra fabric may be needed to match design or for shrinkage.						
Fabric 60" (152 cm) Wide						
View A or B	1 5/8 (1.50)	1 5/8 (1.50)	1 5/8 (1.50)	1 5/8 (1.50)	1 3/4 (1.60)	yd (m)
View C	1 1/4 (1.15)	1 1/4 (1.15)	1 1/4 (1.15)	1 1/4 (1.15)	1 3/8 (1.30)	yd (m)
Fabric 45" (115 cm) Wide						
View A or B	2 3/8 (2.20)	2 3/8 (2.20)	2 1/2 (2.30)	2 5/8 (2.40)	2 7/8 (2.65)	yd (m)
View C	1 3/8 (1.30)	1 3/8 (1.30)	2 (1.85)	2 1/8 (1.95)	2 1/4 (2.10)	yd (m)

Notions: Thread. VIEW C: Scrap piece of fusible interfacing, one button.