



VIEW C - One Size



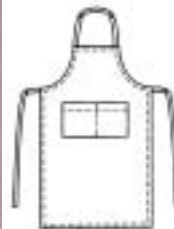
Apron has waistband, pocket and lace or eyelet trim.

Recommended Fabrics: Light to medium weight woven fabrics, cottons and blends, batiste.

Material Required: Fabric 60" (152 cm) Wide - 7/8 yd (0.80 m). Fabric 45" (115 cm) Wide - 1 yd (0.95 m).

Notions: 1 yd (0.95 m) of 2" - 3" (5 cm - 8 cm) wide lace or eyelet, thread.

VIEW D - One Size



Apron has neckband and ties from self fabric, patch pocket and all outside edges are hemmed.

Recommended Fabrics: Medium to heavy weight woven fabrics, cotton types, twill, denim.

Material Required: Fabric 60" (152 cm) Wide - 1 3/8 yd (1.30 m). Fabric 45" (115 cm) Wide - 1 5/8 yd (1.50 m).

Notions: Thread.

KWIK•SEW®

2311 price

APRONS & POT HOLDERS

POT HOLDER



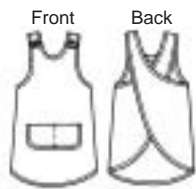
Fabric for pot holder is machine quilted and outside edges are finished with bias tape. Two styles are included, one is round, one is square.

Recommended Fabrics: Medium to heavy weight woven fabric.

Material Required: For one pot holder: Fabric - 3/8 yd (0.30 m) of 20" (50 cm) wide (minimum width).

Notions: 10" x 20" (25 cm x 50 cm) polyester fleece or other batting, 1 yd (0.95 m) of double fold bias tape, thread.

VIEW A - Sizes: S-M-L



Bust sizes:
S 34" - 36"
(86 cm - 91 cm),
M 38" - 40"
(96 cm - 102 cm),
L 42" - 44"
(106 cm - 112 cm).

Apron overlaps and crosses in back, has button closure on shoulders and patch pocket. All outside edges are finished with bias tape.

Recommended Fabrics: Medium weight woven fabrics, cottons and blends.

Material Required: Fabric 60" (152 cm) Wide - 1 3/8 yd (1.30 m) for all sizes. Fabric 45" (115 cm) Wide - 1 3/8 yd (1.30 m) for size S, 1 1/2 yd (1.40 m) for Sizes M-L.

Notions: Double fold bias tape - 6 1/2 yd (6 m) for Sizes S-M; 7 yd (6.5 m) for size L, two 3/4" (20 mm) buttons, scrap piece of fusible interfacing, thread.

VIEW B - One Size



Apron has pockets, all outside edges are finished with double fold bias tape and neckband and ties are from bias tape.

Recommended Fabrics: Medium weight woven fabrics, cottons and blends.

Material Required: Fabric 60" (152 cm) or 45" (115 cm) Wide - 7/8 yd (0.80 m).

Notions: Double fold bias tape - 6 3/4 yd (6.5 m), thread.