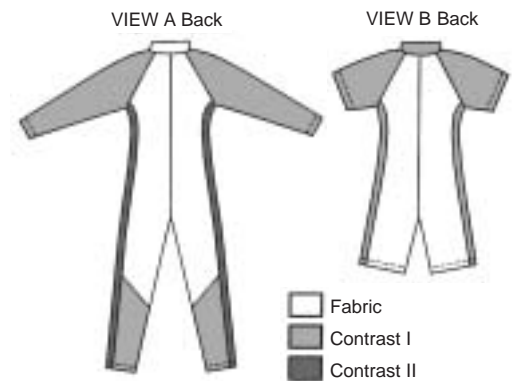




MEN'S

Men's close fitting swimsuits have contrast raglan sleeves, contrast side panels, and zipper opening on front which extends to top edge of collar. View A has long sleeves and contrast lower legs. View B has short sleeves and short legs.



WETSKIN & UV SUIT IN SWIMSUIT FABRIC

KWIK•SEW®
price **2335**

DESIGNED FOR TWO-WAY STRETCH FABRIC WITH 75% STRETCH
Suggested Fabrics: Swimsuit fabric

MEN'S SWIMSUITS
Sizes: S-M-L-XL

Size	S	M	L	XL	
Finished Inside Leg Seam					
View A	28 (71)	28 (71)	28 (71)	28 (71)	" (cm)
View B	10 (25)	10 (25)	10 (25)	10 (25)	" (cm)
Material Required: Extra fabric may be needed to match design or for shrinkage.					
Fabric 60" (152 cm) Wide with the greatest degree of stretch on the lengthwise grain					
View A or B	1 1/8 (1.05)	1 1/4 (1.15)	1 3/8 (1.30)	1 1/2 (1.40)	yd (m)
View A Contrast I	1 (0.95)	1 1/8 (1.05)	1 1/4 (1.15)	1 1/4 (1.15)	yd (m)
View A Contrast II	1/4 (0.25)	1/4 (0.25)	1/4 (0.25)	1/4 (0.25)	yd (m)
View B Contrast I	3/4 (0.70)	3/4 (0.70)	7/8 (0.80)	7/8 (0.80)	yd (m)
Fabric 45" (115 cm) Wide with the greatest degree of stretch on the lengthwise grain					
View A or B	1 1/2 (1.40)	1 5/8 (1.50)	1 5/8 (1.50)	1 3/4 (1.60)	yd (m)
View A Contrast I	1 1/4 (1.15)	1 3/8 (1.30)	1 5/8 (1.50)	1 3/4 (1.60)	yd (m)
View A Contrast II Not suitable for 45" (115) cm wide fabric					
View B Contrast I	3/4 (0.70)	3/4 (0.70)	7/8 (0.80)	7/8 (0.80)	yd (m)
Notions: Thread. One zipper - 24" (60 cm) for size S; 26" (65 cm) for sizes M-L-XL.					