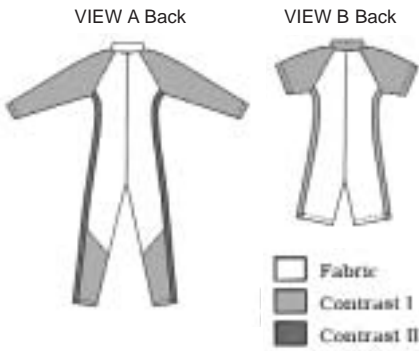
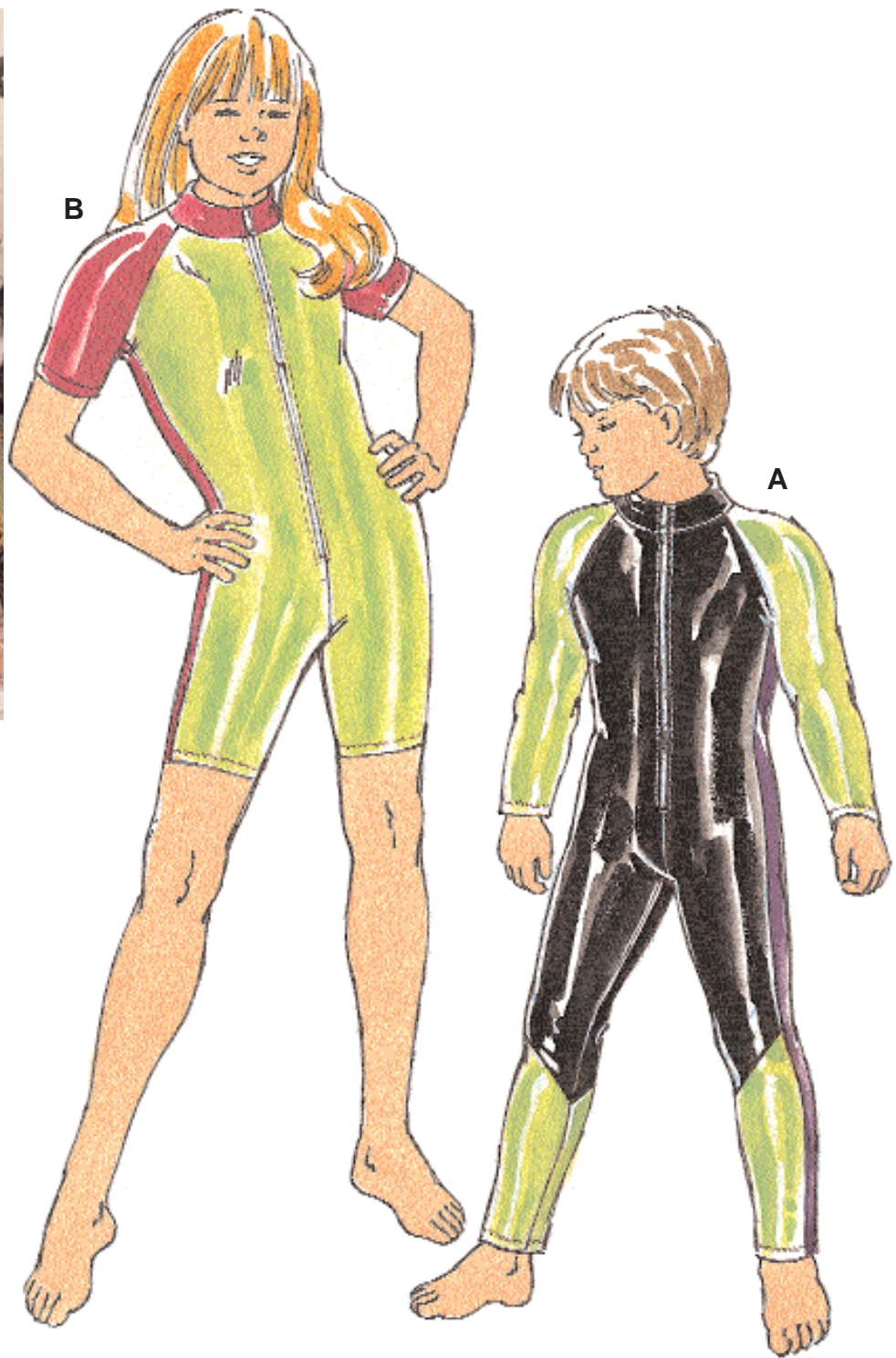


Boys' and Girls' close fitting swimsuits have contrast raglan sleeves, contrast side panels, and zipper opening on front which extends to top edge of collar. View A has long sleeves and contrast lower legs. View B has short sleeves and short legs.



KWIK-SEW®
2336
2337 price

WETSKIN & UV-SUIT IN SWIMSUIT FABRIC

BOYS' & GIRLS' SWIMSUITS

2336 Sizes: 4-5-6-7

2337 Sizes: 8-10-12-14

DESIGNED FOR TWO-WAY STRETCH FABRIC WITH 75% STRETCH
 Suggested Fabrics: Swimsuit fabric

Size	4	5	6	7	8	10	12	14	
Finished Inside Leg									
View A	14 1/2 (37)	16 1/4 (41)	17 3/4 (45)	19 1/4 (49)	21 (53)	22 3/4 (58)	24 3/4 (63)	27 (68)	" (cm)
View B	3 1/2 (9)	4 1/4 (11)	5 (13)	6 (15)	6 1/2 (17)	7 1/2 (19)	8 1/2 (22)	9 1/2 (24)	" (cm)
Material Required:	Fabric requirement allows for nap, one-way design or shading. Extra fabric may be needed to match design or for shrinkage.								
Fabric 60" (152 cm) Wide with Greatest Degree of Stretch on Lengthwise Grain									
View A Fabric	5/8 (0.60)	5/8 (0.60)	3/4 (0.70)	3/4 (0.70)	3/4 (0.70)	7/8 (0.80)	1 (0.95)	1 1/8 (1.05)	yd (m)
Contrast I	3/8 (0.35)	3/8 (0.35)	3/8 (0.35)	1/2 (0.50)	1/2 (0.50)	5/8 (0.60)	5/8 (0.60)	5/8 (0.60)	yd (m)
Contrast II	1/8 (0.15)	1/8 (0.15)	1/4 (0.25)	1/4 (0.25)	1/4 (0.25)	1/4 (0.25)	1/4 (0.25)	1/4 (0.25)	yd (m)
View B Fabric	1/2 (0.50)	1/2 (0.50)	1/2 (0.50)	1/2 (0.50)	3/4 (0.70)	7/8 (0.80)	7/8 (0.80)	1 (0.95)	yd (m)
Contrast I	1/2 (0.50)	1/2 (0.50)	1/2 (0.50)	1/2 (0.50)	1/2 (0.50)	5/8 (0.60)	5/8 (0.60)	5/8 (0.60)	yd (m)
Fabric 45" (115 cm) Wide with Greatest Degree of Stretch on Lengthwise Grain									
View A Fabric	3/4 (0.70)	7/8 (0.80)	7/8 (0.80)	1 (0.95)	1 (0.95)	1 (0.95)	1 1/4 (1.15)	1 3/8 (1.30)	yd (m)
Contrast I	1/2 (0.50)	1/2 (0.50)	1/2 (0.50)	1/2 (0.50)	7/8 (0.80)	7/8 (0.80)	1 (0.95)	1 (0.95)	yd (m)
Contrast II	1/4 (0.25)	1/4 (0.25)	1/4 (0.25)	1/4 (0.25)	1/4 (0.25)	1/4 (0.25)	1/4 (0.25)	1/4 (0.25)	yd (m)
View B Fabric	5/8 (0.60)	3/4 (0.70)	3/4 (0.70)	3/4 (0.70)	7/8 (0.80)	7/8 (0.80)	1 (0.95)	1 1/8 (1.05)	yd (m)
Contrast I	1/2 (0.50)	1/2 (0.50)	1/2 (0.50)	1/2 (0.50)	5/8 (0.60)	5/8 (0.60)	5/8 (0.60)	5/8 (0.60)	yd (m)

Notions: Thread. One zipper - 14" (35 cm) for sizes 4-5; 16" (40 cm) for sizes 6-7; 18" (45 cm) for sizes 8-10; 20" (50 cm) for size 12; 22" (55 cm) for size 14.