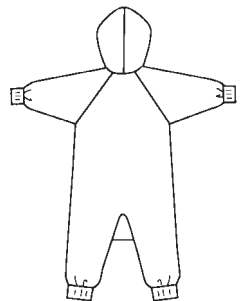


VIEW A Back



VIEW B Back

Toddlers' sleeper and jumpsuit has raglan sleeves, zipper opening at center front and inside leg and long sleeves with ribbing cuffs. View A has ribbing neckband, feet with optional gripper fabric and elastic at ankles. View B has hood with elastic in casing at front edge, and ribbing leg cuffs.

**KWIK•SEW®**  
**2360** price

**TODDLERS' SLEEPER & JUMPSUIT** DESIGNED FOR STRETCH KNITS ONLY  
 Sizes: T1-T2-T3-T4 Suggested Fabrics: Blanket fleece, sweatshirt fleece, double knit

Size	T1	T2	T3	T4	
<b>Material Required:</b> Fabric requirement allows for nap, one-way design or shading. Extra fabric may be needed to match design or for shrinkage.					
<b>Fabric 60" (152 cm) Wide</b>					
View A	1 (0.95)	1 (0.95)	1 1/8 (1.05)	1 1/4 (1.15)	yd (m)
View B	7/8 (0.80)	7/8 (0.80)	1 (0.95)	1 (0.95)	yd (m)
<b>Ribbing 28" (71 cm) Wide</b>					
View A	4 (10)	4 (10)	4 (10)	4 (10)	" (cm)
View B	5 (12)	5 (12)	5 (12)	5 (12)	" (cm)

**Notions:** Thread, Zipper-20" (50 cm) for Size T1; 22" (55 cm) for Size T2; 24" (60 cm) for Sizes T3 - T4.  
 VIEW A: Piece of gripper fabric 8" x 8" (20 cm x 20 cm)-optional, 1/2 yd (0.60 m) of 1/8" (3 mm) wide elastic.  
 VIEW B: 5/8 yd (0.60 m) of 1/4" (6 mm) wide elastic.