

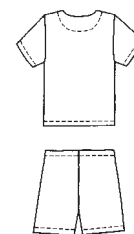
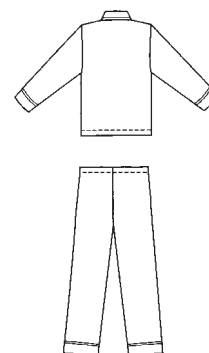


MEN'S

Men's pajamas. View A Shirt has long sleeves and piping on collar, patch pocket and sleeve cuffs. View B Shirt has short sleeves, V-neckline, patch pocket and optional piping trim. Pants have fly with snap closure, elastic with ties at waist. View A long pants have cuffs with piping trim. View B are shorts.

VIEW A Back

VIEW B Back



KWIK•SEW®
price **2388**

DESIGNED FOR LIGHTWEIGHT WOVEN FABRICS

Suggested Fabrics: Cotton, cotton types, silk, silk like fabrics, broadcloth, chambray, flannelette, seersucker

MEN'S PAJAMAS
Sizes: S-M-L-XL-XXL

Size	S	M	L	XL	XXL
Finished Length of Shirt at Center Back					
View A & B	28 1/2 (72)	29 (73)	29 1/2 (74)	30 (76)	30 1/2 (77) " (cm)
Finished Inside Leg Seam					
View A	29 1/2 (75)	29 1/2 (75)	29 1/2 (75)	29 1/2 (75)	29 1/2 (75) " (cm)
View B	5 1/2 (14)	5 1/2 (14)	5 1/2 (14)	5 1/2 (14)	5 1/2 (14) " (cm)
Material Required: Fabric requirement allows for nap, one-way design or shading. Extra fabric may be needed to match design or for shrinkage.					
Fabric 60" (152 cm) Wide					
View A	3 1/2 (3.20)	3 5/8 (3.35)	3 5/8 (3.35)	4 1/4 (3.90)	4 1/2 (4.15) yd (m)
View B	2 3/8 (2.20)	2 3/8 (2.20)	2 1/2 (2.30)	2 7/8 (2.65)	3 (2.75) yd (m)
Fabric 45" (115 cm) Wide					
View A	4 3/4 (4.35)	4 7/8 (4.50)	5 (4.60)	5 1/8 (4.70)	5 7/8 (5.40) yd (m)
View B	3 1/4 (3.00)	3 3/8 (3.10)	3 1/2 (3.20)	3 1/2 (3.20)	4 1/8 (3.80) yd (m)
Notions: Thread, scrap piece of fusible interfacing, 1 yd (0.95 m) of 3/4" (2 cm) wide elastic for waist, two snaps, three 3/4" (20 mm) buttons. VIEW A: 6 yd (5.50 m) of piping. VIEW B: Optional piping - 2 1/2 yd (2.30 m).					