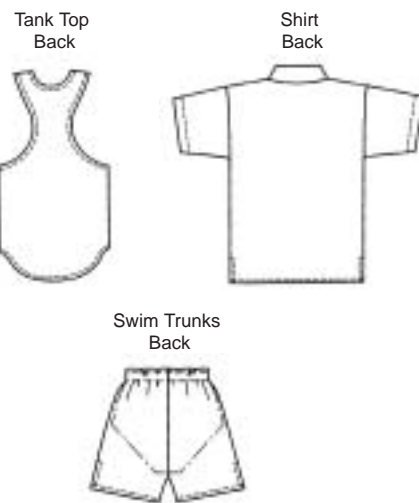


Men's swim trunks, shirt and tank top. Swim trunks have stitched elastic waist with drawstring, fitted lining with elastic at leg openings. Loose fitting shirt has short sleeves, side hemline slits and pocket. Tank top has wrestling style back, shaped hemline and all outside edges are finished with narrow hems.



KWIK•SEW®
2417 price

MEN'S SHIRT, SWIM TRUNKS & TANK TOP

Sizes: S-M-L-XL-XXL

SHIRT & SWIM TRUNKS DESIGNED FOR LIGHT TO MEDIUM WEIGHT WOVEN FABRICS.

Suggested Fabrics: Cotton, cotton blends, broadcloth, supplex, nylon and blends

TANK TOP DESIGNED FOR STRETCH KNITS ONLY WITH 20% STRETCH

Suggested Fabrics: Single knit, golf knit, interlock

Size	S	M	L	XL	XXL	
Finished Length of Shirt at Center Back	28 1/4 (71)	29 1/4 (74)	30 1/4 (77)	31 1/4 (79)	32 1/4 (82)	" (cm)
Finished Length of Tank Top at Center Back from Natural Neckline	29 (73)	30 (76)	31 (79)	32 (81)	33 (84)	" (cm)
Finished Inside Leg Seam of Swim Trunks	2 1/2 (6)	2 1/2 (6)	2 1/2 (6)	2 1/2 (6)	2 1/2 (6)	" (cm)
Material Required: Fabric requirement allows for nap, one-way design or shading. Extra fabric may be needed to match design or for shrinkage.						
Fabric 60" (152 cm) Wide						
Shirt	1 3/4 (1.60)	1 7/8 (1.75)	1 7/8 (1.75)	2 (1.85)	2 (1.85)	yd (m)
Tank Top	1 (0.95)	1 (0.95)	1 (0.95)	1 (0.95)	1 (0.95)	yd (m)
Swim Trunks	5/8 (0.60)	5/8 (0.60)	3/4 (0.70)	7/8 (0.80)	1 1/8 (1.05)	yd (m)
Fabric 45" (115 cm) Wide						
Shirt	2 1/8 (1.95)	2 1/8 (1.95)	2 3/8 (2.20)	2 5/8 (2.40)	2 5/8 (2.40)	yd (m)
Swim Trunks	1 (0.95)	1 (0.95)	1 1/8 (1.05)	1 1/8 (1.05)	1 1/8 (1.05)	yd (m)
Lining 60" (152 cm) or 45" (115 cm) wide with 75% stretch						
Swim Trunks	5/8 (0.60)	3/4 (0.70)	3/4 (0.70)	7/8 (0.80)	7/8 (0.80)	yd (m)
Fusible Interfacing 22" (56 cm) Wide						
Shirt	7/8 (0.80)	1 (0.95)	1 (0.95)	1 (0.95)	1 (0.95)	yd (m)

Notions: Thread. SHIRT: Six 1/2" (12 mm) buttons.

SWIM TRUNKS: 1 5/8 yd (1.50 m) of 3/8" (1 cm) wide swimsuit elastic, 1 1/8 yd (1.05 m) of 1 1/2" (4 cm) wide elastic, one drawstring.