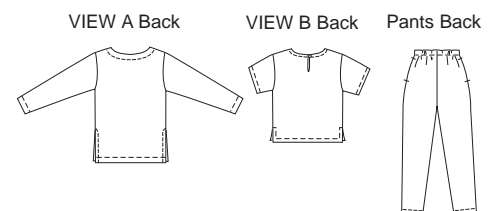




Misses' tunic, top and pants. Loose fitting tops have extended shoulders and side hemline slits. View A has boat neckline finished with facing and long sleeves. View B has faced round neckline, slit with loop and button closure on back, and short sleeves. Pull-on pants have elastic waist and pockets in side seams.



PANTS

KWIK & EASY

KWIK•SEW®
price **2496**

DESIGNED FOR LIGHT TO MEDIUM WEIGHT WOVEN FABRICS

Suggested Fabrics: Crepe, challis, rayon and blends, cotton types, silk, silk like fabrics, linens

MISSSES' PANTS, TUNIC & TOP

Sizes: XS-S-M-L-XL

Size	XS	S	M	L	XL	
Finished Length from Natural Neckline at Center Back						
View A	27 1/4 (69)	28 1/4 (72)	29 1/4 (74)	30 1/4 (77)	31 1/4 (79)	" (cm)
View B	22 (55)	22 1/2 (57)	23 (58)	23 3/4 (60)	24 1/4 (62)	" (cm)
Finished Inside Leg Seam						
	28 1/2 (73)	28 1/2 (73)	28 1/2 (73)	28 1/2 (73)	28 1/2 (73)	" (cm)
Finished Width at Bottom Edge of Leg						
	12 (30)	13 (33)	14 (36)	15 (38)	16 (41)	" (cm)
Material Required: Fabric requirement allows for nap, one-way design or shading. Extra fabric may be needed to match design or for shrinkage.						
Fabric 60" (152 cm) Wide						
View A Tunic	1 5/8 (1.50)	1 5/8 (1.50)	1 5/8 (1.50)	1 3/4 (1.60)	1 3/4 (1.60)	yd (m)
Pants	1 5/8 (1.50)	1 5/8 (1.50)	1 5/8 (1.50)	2 1/8 (1.95)	2 1/4 (2.10)	yd (m)
View B Top & Pants	2 1/2 (2.30)	2 1/2 (2.30)	2 5/8 (2.40)	2 5/8 (2.40)	2 3/4 (2.55)	yd (m)
Fabric 45" (115 cm) Wide						
View A Tunic	1 3/4 (1.60)	1 7/8 (1.75)	1 7/8 (1.75)	2 5/8 (2.40)	2 3/4 (2.55)	yd (m)
Pants	2 1/2 (2.30)	2 1/2 (2.30)	2 5/8 (2.40)	2 5/8 (2.40)	2 3/4 (2.55)	yd (m)
View B Top & Pants	3 7/8 (3.55)	4 (3.70)	4 1/8 (3.80)	4 1/8 (3.80)	4 1/2 (4.15)	yd (m)
Fusible Interfacing 22" (56 cm) Wide						
View A Tunic	3/8 (0.35)	3/8 (0.35)	3/8 (0.35)	3/8 (0.35)	3/8 (0.35)	yd (m)
Pants	1/8 (0.15)	1/8 (0.15)	1/8 (0.15)	1/8 (0.15)	1/8 (0.15)	yd (m)
View B Top & Pants	3/8 (0.35)	3/8 (0.35)	3/8 (0.35)	3/8 (0.35)	3/8 (0.35)	yd (m)

Notions: Thread. Pants: 1 yd (0.95 m) of 1" (2.5 cm) wide elastic. Top VIEW B: One 3/8" (10 mm) button.