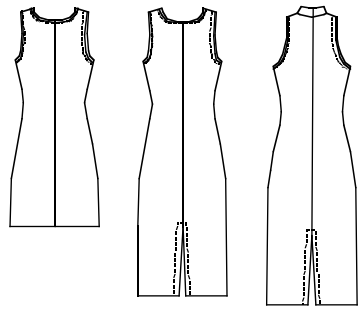




Misses' close fitting pull-over dresses have center back seam. View A and B tank style dresses have neckline and armholes finished with self fabric binding. View C "halter" style has mock turtleneck and armholes are finished with self fabric binding. View B and C have straight skirt with hemline slit at center back.

VIEW A Back VIEW B Back VIEW C Back



KWIK & EASY

KWIK·SEW®
price **2517**

DESIGNED FOR STRETCH KNITS ONLY WITH 50% STRETCH
Suggested Fabrics: Interlock, textured knits, cotton Lycra®, stretch velvet, stretch velour

MISSSES' DRESSES
Sizes: XS-S-M-L-XL

Size	XS	S	M	L	XL	
Finished Length from Natural Waist						
View A	18 1/2 (47)	18 1/2 (47)	18 1/2 (47)	18 1/2 (47)	18 1/2 (47)	" (cm)
View B and C	33 1/2 (85)	33 1/2 (85)	33 1/2 (85)	33 1/2 (85)	33 1/2 (85)	" (cm)
Material Required: Fabric requirement allows for nap, one-way design or shading. Extra fabric may be needed to match design or for shrinkage.						
Fabric 60" (152 cm) Wide						
View A	1 1/4 (1.15)	1 1/4 (1.15)	1 1/4 (1.15)	1 1/4 (1.15)	1 1/4 (1.15)	yd (m)
View B or C	1 5/8 (1.50)	1 5/8 (1.50)	1 5/8 (1.50)	1 5/8 (1.50)	1 5/8 (1.50)	yd (m)
Notions: Thread.						