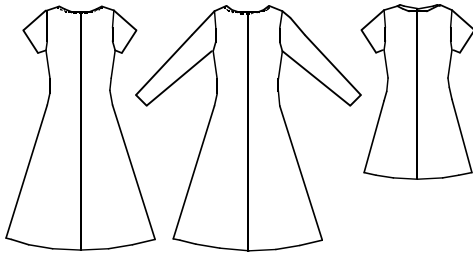


Misses' pull-over dresses have center back seam and A-line skirts. View A and B have neckline finished with self fabric binding. View A has short sleeves, View B has long sleeves. View C has V-neckline with self fabric neckband and short sleeves.

VIEW A Back    VIEW B Back    VIEW C Back



**KWIK•SEW®**  
**2518** price

**KWIK & EASY**

**MISSSES' DRESSES**    **DESIGNED FOR STRETCH KNITS ONLY WITH 25% STRETCH**  
 Sizes: XS-S-M-L-XL    Suggested Fabrics: Interlock, textured knits, stretch velvet, stretch velour

Size	XS	S	M	L	XL	
<b>Finished Length from Natural Waist</b>						
View A and B	33 1/2 (85)	33 1/2 (85)	33 1/2 (85)	33 1/2 (85)	33 1/2 (85)	" (cm)
View C	18 1/2 (47)	18 1/2 (47)	18 1/2 (47)	18 1/2 (47)	18 1/2 (47)	" (cm)
<b>Finished Width at Bottom Edge</b>						
View A & B	53 (134)	56 1/2 (143)	60 (152)	63 (158)	66 (167)	" (cm)
View C	43 (109)	47 (119)	50 (127)	53 (134)	58 (147)	" (cm)
<b>Material Required:</b> Fabric requirement allows for nap, one-way design or shading. Extra fabric may be needed to match design or for shrinkage.						
<b>Fabric 60" (152 cm) Wide</b>						
View A	1 3/4 (1.60)	1 3/4 (1.60)	1 7/8 (1.75)	2 1/4 (2.10)	2 5/8 (2.40)	yd (m)
View B	2 1/4 (2.10)	2 1/4 (2.10)	2 1/4 (2.10)	2 3/8 (2.20)	2 3/4 (2.55)	yd (m)
View C	1 1/4 (1.15)	1 3/8 (1.30)	1 3/8 (1.30)	1 3/8 (1.30)	1 3/8 (1.30)	yd (m)

**Notions:** Thread, scrap piece of fusible interfacing.