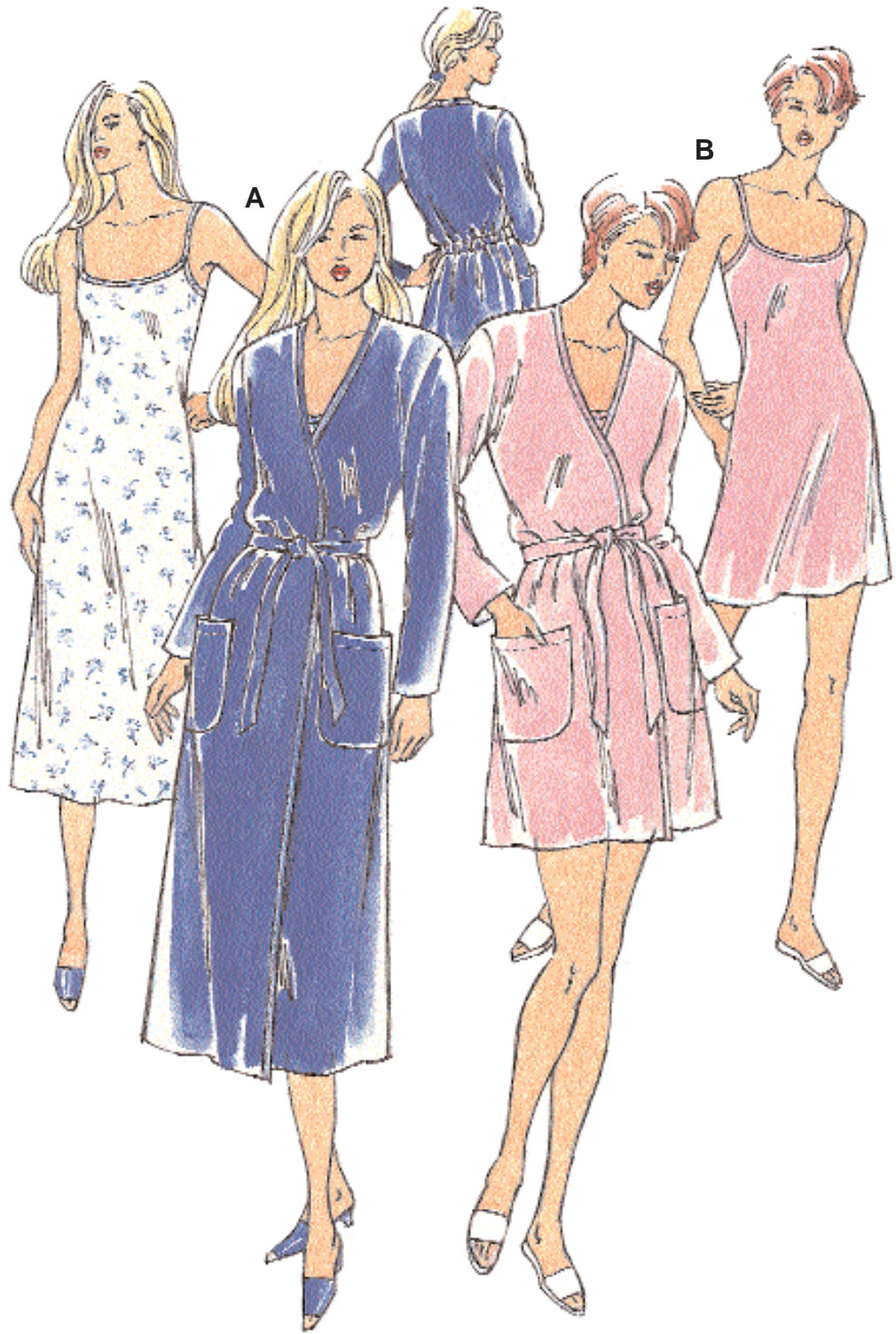
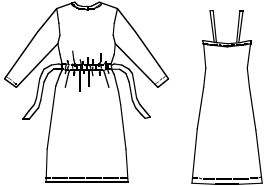




Misses' gown and robe. Gown is close fitting, slightly flared and has neckline finished with self fabric binding and binding extends for shoulder straps. Wrap robe has patch pockets, long sleeves and front edges and neckline finished with self fabric binding. View A has elastic in casing at back waist and tie belts are attached at side seams. View B has belt loops and tie belt.



VIEW A Back



VIEW B Back



KWIK•SEW®

2528 price 

MISSES' ROBE & GOWN
 Sizes: XS-S-M-L-XL

DESIGNED FOR STRETCH KNITS ONLY WITH 25% STRETCH
 Suggested Fabrics: Interlock, thermal knits, textured knits

Size	XS	S	M	L	XL	
Finished Length from Natural Waist						
View A Robe	31 (78)	31 (78)	31 (78)	31 (78)	31 (78)	" (cm)
Gown	30 (76)	30 (76)	30 (76)	30 (76)	30 (76)	" (cm)
View B Robe	17 1/4 (43)	17 1/4 (43)	17 1/4 (43)	17 1/4 (43)	17 1/4 (43)	" (cm)
Gown	16 3/4 (42)	16 3/4 (42)	16 3/4 (42)	16 3/4 (42)	16 3/4 (42)	" (cm)
Material Required: Fabric requirement allows for nap, one-way design, or shading. Extra fabric may be needed to match design or for shrinkage.						
Fabric 60" (152 cm) Wide						
View A Robe & Gown	3 3/4 (3.45)	3 3/4 (3.45)	3 7/8 (3.55)	4 1/8 (3.80)	4 3/8 (4.00)	yd (m)
Robe	2 3/8 (2.20)	2 3/8 (2.20)	2 1/2 (2.30)	2 3/4 (2.55)	3 (2.75)	yd (m)
Gown	1 3/8 (1.30)	1 3/8 (1.30)	1 3/8 (1.30)	1 3/8 (1.30)	1 3/8 (1.30)	yd (m)
View B Robe & Gown	2 7/8 (2.65)	2 7/8 (2.65)	3 (2.75)	3 1/4 (3.00)	3 1/2 (3.20)	yd (m)
Robe	1 7/8 (1.75)	1 7/8 (1.75)	2 (1.85)	2 1/4 (2.10)	2 1/2 (2.30)	yd (m)
Gown	1 (0.95)	1 (0.95)	1 (0.95)	1 (0.95)	1 (0.95)	yd (m)

Notions: Thread. Robe: Scrap piece of fusible interfacing. Robe VIEW A: 1/2 yd (0.50 m) of 1" (2.5 cm) wide elastic.