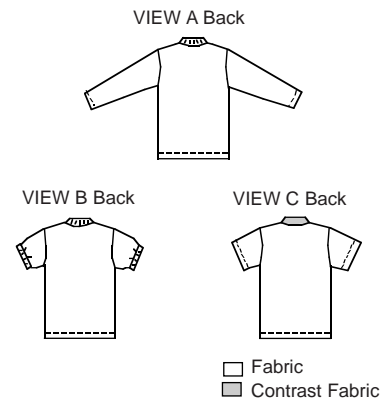


Men's pull-over shirts. View A has V-neckline with self fabric neckband, ribbing collar, patch pocket and long sleeves. View B has contrast fabric front welt with zipper, ribbing collar and ribbing sleeve bands. View C has short sleeves, short front placket and collar from contrast fabric.



KWIK & EASY

KWIK•SEW®
price **2530**

DESIGNED FOR STRETCH KNITS ONLY WITH 20% STRETCH
Suggested Fabrics: Interlock, single knit, textured knits

MEN'S SHIRTS
Sizes: S-M-L-XL-XXL

Size	S	M	L	XL	XXL	
Finished Length at Center Back						
View A, B & C	28 (71)	28 1/2 (72)	29 (73)	29 1/2 (75)	30 (76)	" (cm)
Material Required: Fabric requirement allows for nap, one-way design or shading. Extra fabric may be needed to match design or for shrinkage.						
Fabric 60" (152 cm) Wide						
View A	1 5/8 (1.50)	1 3/4 (1.60)	1 3/4 (1.60)	1 3/4 (1.60)	1 7/8 (1.75)	yd (m)
View B	1 1/4 (1.15)	1 1/4 (1.15)	1 1/4 (1.15)	1 3/8 (1.30)	1 3/8 (1.30)	yd (m)
View C Fabric	1 1/4 (1.15)	1 1/4 (1.15)	1 1/4 (1.15)	1 3/8 (1.30)	1 3/8 (1.30)	yd (m)
Contrast Fabric 30" (76 cm) Wide (minimum width)						
	1/4 (0.25)	1/4 (0.25)	1/4 (0.25)	1/4 (0.25)	1/4 (0.25)	yd (m)
Ribbing 28" (71 cm) Wide						
View A (optional)	10 (25)	10 (25)	10 (25)	10 (25)	10 (25)	" (cm)
View B Collar & Sleeve Bands	12 (30)	12 (30)	15 (38)	15 (38)	15 (38)	" (cm)
or Sleeve Bands only	3 (7)	3 (7)	6 (15)	6 (15)	6 (15)	" (cm)
Fusible Interfacing 22" (56 cm) Wide						
View C	3/8 (0.35)	3/8 (0.35)	3/8 (0.35)	3/8 (0.35)	3/8 (0.35)	yd (m)

Notions: Thread. VIEW A: Scrap piece of fusible interfacing, one ribbed collar (if not using ribbing for collar). VIEW B: Scrap piece of fabric and fusible interfacing for front zipper welt, 6" (15 cm) zipper, one ribbed collar (if not using ribbing for collar). VIEW C: One 5/8" (15 mm) button.