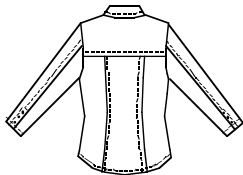
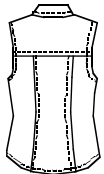


Misses' blouses have front and back yokes, three panel front and back, pockets in yoke seam with flaps, shaped hemline and topstitching details. View A has collar, two piece long sleeves with three button closures. View B sleeveless blouse has collar and armholes are finished with bias cut self fabric binding. View C sleeveless blouse has V-neckline and armholes are finished with bias cut self fabric bindings.

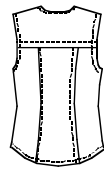
VIEW A Back



VIEW B Back



VIEW C Back



KWIK•SEW®
price **2539**

DESIGNED FOR LIGHT TO MEDIUM WEIGHT WOVEN FABRICS
Suggested Fabrics: Cotton, cotton types, chambray, linen, shantung, twill, velveteen, corduroy

MISSES' BLOUSES
Sizes: XS-S-M-L-XL

Size	XS	S	M	L	XL	
Finished Length at Center Back						
View A, B & C	24 1/2 (62)	25 (63)	25 1/2 (65)	26 (66)	26 1/2 (67)	" (cm)
Material Required:	Fabric requirement allows for nap, one-way design or shading. Extra fabric may be needed to match design or for shrinkage.					
Fabric 60" (152 cm) Wide						
View A	1 3/4 (1.60)	1 3/4 (1.60)	1 3/4 (1.60)	1 3/4 (1.60)	1 7/8 (1.75)	yd (m)
View B	1 1/4 (1.15)	1 1/4 (1.15)	1 3/8 (1.30)	1 3/8 (1.30)	1 3/8 (1.30)	yd (m)
View C	1 3/8 (1.30)	1 3/8 (1.30)	1 3/8 (1.30)	1 3/8 (1.30)	1 3/8 (1.30)	yd (m)
Fabric 45" (115 cm) Wide						
View A	2 3/8 (2.20)	2 3/8 (2.20)	2 3/8 (2.20)	2 3/8 (2.20)	2 1/2 (2.30)	yd (m)
View B	1 3/4 (1.60)	1 3/4 (1.60)	1 3/4 (1.60)	1 7/8 (1.75)	1 7/8 (1.75)	yd (m)
View C	1 3/4 (1.60)	1 3/4 (1.60)	1 7/8 (1.75)	1 7/8 (1.75)	1 7/8 (1.75)	yd (m)
Fusible Interfacing 22" (56 cm) Wide						
View A & B	5/8 (0.60)	5/8 (0.60)	5/8 (0.60)	5/8 (0.60)	5/8 (0.60)	yd (m)
View C	7/8 (0.80)	7/8 (0.80)	7/8 (0.80)	7/8 (0.80)	7/8 (0.80)	yd (m)
Notions:	Thread. VIEW A: Thirteen 5/8" (15 mm) buttons. VIEW B: Seven 5/8" (15 mm) buttons. VIEW C: Six 5/8" (15 mm) buttons.					