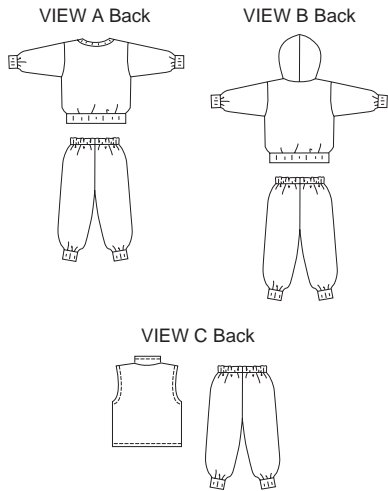
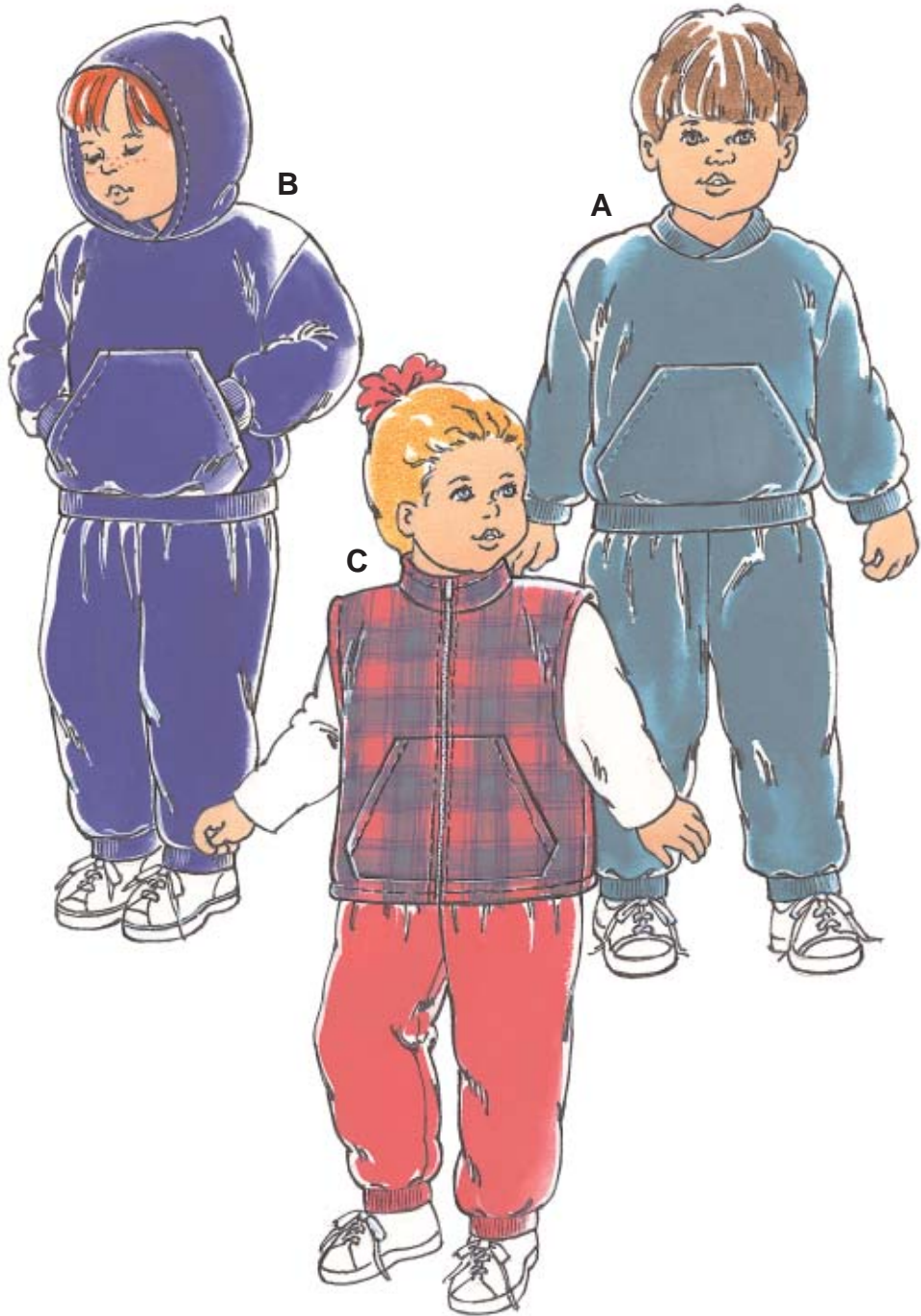


Hat Pattern 2450

Toddler's pull-over jackets, vest and pants. Pants without side seams have elastic in casing at waist and ribbing cuffs. View A and B have patch pocket, long sleeves with ribbing cuffs and waistband. View A has overlapped ribbing neckband. View B has hood. View C vest has patch pockets, collar and zipper opening.



KWIK•SEW®
2547 price

KWIK & EASY

TODDLER PULL-OVER JACKETS, VEST & PANTS

DESIGNED FOR HEAVYWEIGHT STRETCH KNITS ONLY
Suggested Fabrics: Polarfleece®, sweatshirt fleece

Sizes: T1-T2-T3-T4

Size	T1	T2	T3	T4	
Finished Length:					
Jacket View A & B	12 (30)	13 (33)	13 3/4 (35)	14 1/2 (37)	" (cm)
Vest View C	13 1/4 (33)	14 1/4 (36)	15 (38)	16 (40)	" (cm)
Finished Inside Leg Seam of Pants	10 1/4 (26)	11 3/4 (30)	13 (33)	14 1/2 (37)	" (cm)
Material Required: Fabric requirement allows for nap, one-way design or shading. Extra fabric may be needed to match design or for shrinkage.					
Fabric 60" (152 cm) Wide					
View A	1 (0.95)	1 1/8 (1.05)	1 1/8 (1.05)	1 1/4 (1.15)	yd (m)
View B	1 1/4 (1.15)	1 3/8 (1.30)	1 3/8 (1.30)	1 1/2 (1.40)	yd (m)
View C Vest	1/2 (0.50)	1/2 (0.50)	5/8 (0.60)	5/8 (0.60)	yd (m)
Pants	5/8 (0.60)	3/4 (0.70)	3/4 (0.70)	3/4 (0.70)	yd (m)
Ribbing 28" (71 cm) Wide					
View A	13 (33)	13 (33)	13 (33)	13 (33)	" (cm)
View B	9 (23)	9 (23)	9 (23)	9 (23)	" (cm)
View C Pants	4 (10)	4 (10)	4 (10)	4 (10)	" (cm)

Notions: Thread, scrap piece of fusible interfacing, 5/8 yd (0.60 m) of 3/4" (2 cm) wide elastic. View C: One separating zipper – 14" (35 cm) for sizes T1-T2; 16" (40 cm) for sizes T3-T4. Note: Purchase suggested length for zipper or longer (zipper will be trimmed).