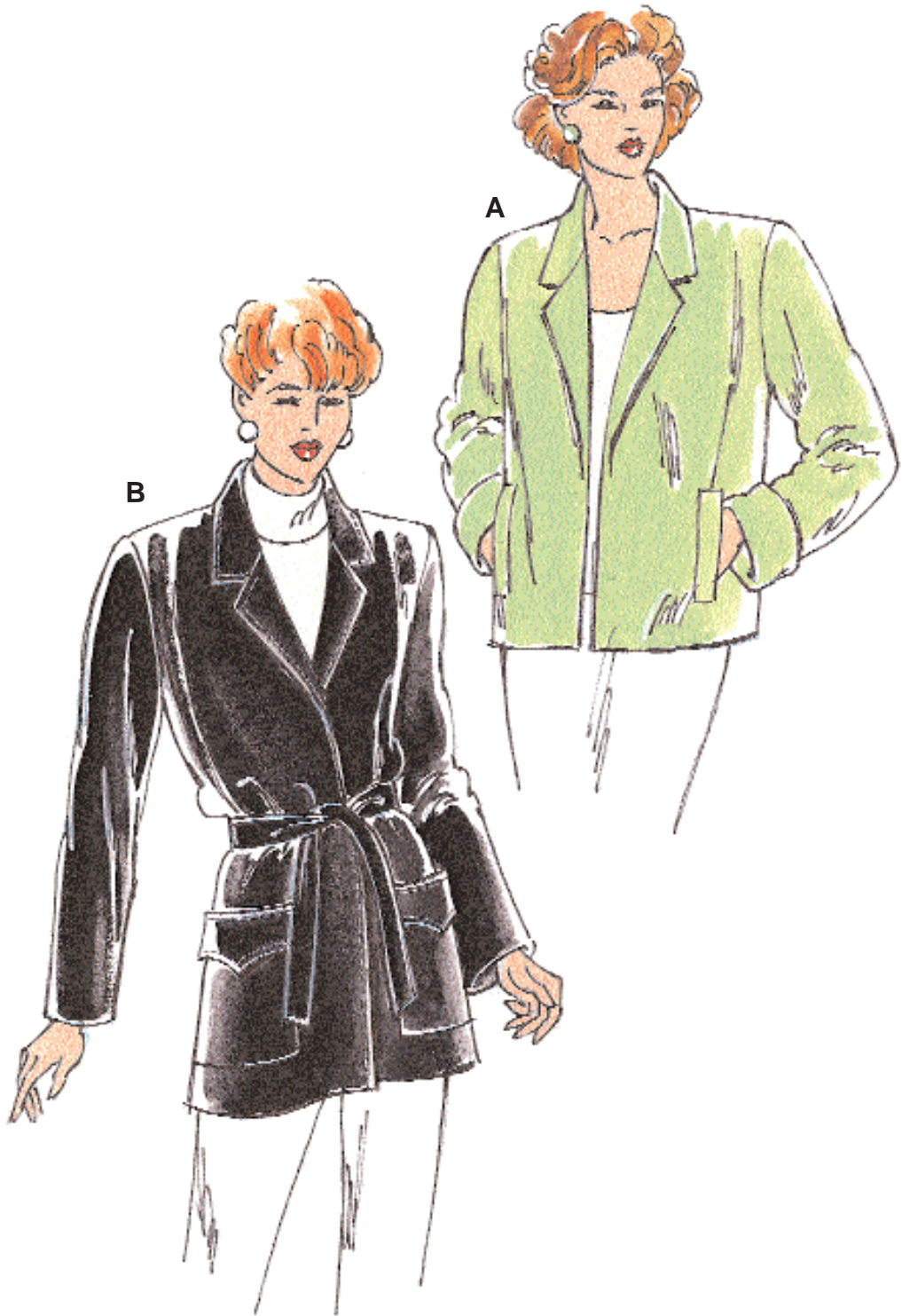




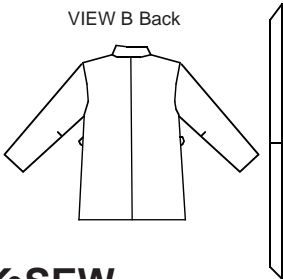
Misses' straight unlined jackets without closure have shoulder pads, collar and lapels. View A jacket has welt pockets and fold-up cuffs. View B has patch pockets with flaps with optional buttons, belt loops and tie belt.



VIEW A Back



VIEW B Back



KWIK•SEW®
2574 price

KWIK & EASY

MISSSES' JACKETS
 Sizes: XS-S-M-L-XL

DESIGNED FOR WOVEN AND FIRM KNIT FABRICS

Suggested Fabrics: Cotton, cotton types, silk types, corduroy, gabardine, wool, wool types, linen, rayon suitings, double knit

Size	XS	S	M	L	XL	
Finished Length of Jacket at Center Back						
View A	22 3/4 (57)	23 (58)	23 1/2 (60)	24 (61)	24 3/4 (63)	" (cm)
View B (unbelted)	28 3/4 (73)	29 1/2 (75)	30 1/2 (77)	31 1/2 (80)	32 1/2 (82)	" (cm)
Material Required: Fabric requirement allows for nap, one-way design or shading. Extra fabric may be needed to match design or for shrinkage.						
Fabric 60" (152 cm) Wide						
View A	1 7/8 (1.75)	2 (1.85)	2 (1.85)	2 (1.85)	2 1/8 (1.95)	yd (m)
View B	2 1/8 (1.95)	2 1/4 (2.10)	2 1/4 (2.10)	2 1/2 (2.30)	2 1/2 (2.30)	yd (m)
Fabric 45" (115 cm) Wide						
View A	2 5/8 (2.40)	2 5/8 (2.40)	2 3/4 (2.55)	2 3/4 (2.55)	2 7/8 (2.65)	yd (m)
View B	3 (2.75)	3 1/8 (2.85)	3 1/8 (2.85)	3 1/4 (3.00)	3 3/8 (3.10)	yd (m)
Fusible Interfacing 22" (56 cm) Wide						
View A	3/4 (0.70)	7/8 (0.80)	7/8 (0.80)	7/8 (0.80)	7/8 (0.80)	yd (m)
View B	1 (0.95)	1 (0.95)	1 (0.95)	1 1/8 (1.05)	1 1/8 (1.05)	yd (m)

Notions: Thread, covered shoulder pads. VIEW B: Optional - two 3/4" (20 mm) buttons for pockets.