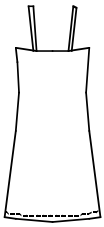


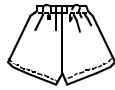
Chemise Back



Camisole Back



Shorts Back



Misses' bias cut chemise, camisole and shorts. Chemise and camisole have narrow shoulder straps, top edges are finished with facings and bottom edges are finished with narrow hems. Shorts have stitched elastic at waist and narrow hems at leg openings.



KWIK•SEW®

2589 price

MISSES' CHEMISE, CAMISOLE & SHORTS

Sizes: XS-S-M-L-XL

DESIGNED FOR SOFT LIGHTWEIGHT WOVEN FABRICS

Suggested Fabrics: Silk, silk like fabrics, crepe de chine, batiste, satin, charmeuse

Size	XS	S	M	L	XL	
Finished Length from Natural Neckline						
Chemise	30 1/4 (77)	31 1/4 (79)	32 1/2 (82)	33 3/4 (86)	34 1/2 (88)	" (cm)
Camisole	20 3/4 (52)	21 1/2 (54)	22 1/2 (57)	23 1/2 (59)	24 (61)	" (cm)
Finished Inside Leg Seam of Shorts						
	1 (2.5)	1 (2.5)	1 (2.5)	1 (2.5)	1 (2.5)	" (cm)
Material Required: Extra fabric may be needed to match design or for shrinkage.						
Fabric 60" (152 cm) Wide						
Chemise	7/8 (0.80)	1 (0.95)	1 1/8 (1.05)	1 1/4 (1.15)	1 3/8 (1.30)	yd (m)
Camisole	5/8 (0.60)	3/4 (0.70)	3/4 (0.70)	3/4 (0.70)	3/4 (0.70)	yd (m)
Shorts	5/8 (0.60)	3/4 (0.70)	7/8 (0.80)	1 (0.95)	1 (0.95)	yd (m)
Camisole & Shorts	1 1/4 (1.15)	1 1/4 (1.15)	1 3/8 (1.30)	1 5/8 (1.50)	1 3/4 (1.60)	yd (m)
Fabric 45" (115 cm) Wide						
Chemise	1 3/8 (1.30)	1 3/8 (1.30)	1 5/8 (1.50)	1 3/4 (1.60)	1 3/4 (1.60)	yd (m)
Camisole	7/8 (0.80)	7/8 (0.80)	7/8 (0.80)	1 (0.95)	1 1/8 (1.05)	yd (m)
Shorts	7/8 (0.80)	7/8 (0.80)	1 (0.95)	1 1/8 (1.05)	1 1/4 (1.15)	yd (m)
Camisole & Shorts	1 1/2 (1.40)	1 5/8 (1.50)	1 3/4 (1.60)	1 7/8 (1.75)	2 1/8 (1.95)	yd (m)

Notions: Thread. SHORTS: 7/8 yd (0.80 m) of 3/4" (2 cm) wide elastic.